

TEST REPORT

Applicant: Shenzhen Huafurui Technology Co., Ltd
Address: Unit 1401 & 1402, 14/F, Jinqi Zhigu Mansion (No. 4 Building of Chongwen Garden), Crossing of the Liuxian Street and Tangling Road, Taoyuan Street, Nanshan District, Shenzhen, P.R. China

The following sample(s) was/were submitted and identified on behalf of the client as:

Product name: Smartphone
Model: POCKET
Trade mark: CUBOT
Manufacturer: Shenzhen Huafurui Technology Co., Ltd
Address: Unit 1401 & 1402, 14/F, Jinqi Zhigu Mansion (No. 4 Building of Chongwen Garden), Crossing of the Liuxian Street and Tangling Road, Taoyuan Street, Nanshan District, Shenzhen, P.R. China

Sample Received Date: Apr. 01, 2022
Testing Period: Apr. 01, 2022~ May. 27, 2022

Test Requirement:

As specified by client, to determine the Lead(Pb), Cadmium(Cd), Mercury(Hg), Hexavalent Chromium (Cr(VI)), Polybrominated Biphenyls(PBBs), Polybrominated, Diphenyl Ethers(PBDEs), Bis-(2-ethylhexyl) Phthalate (DEHP), Benzyl butyl Phthalate (BBP), Dibutyl Phthalate (DBP) and Diisobutyl Phthalate(DIBP) contents in the submitted sample in accordance with RoHS Directive (EU) 2015/863 amending Annex II to Directive 2011/65/EU.

Test Result(s): Please refer to the following page(s);

Test Method: Please refer to the following page(s);

Compiled by: _____

Dora

Reviewed by: _____

Blmar

Approved by: _____

Mark Liao

Date: _____

2022-05-31

Test Result(s):
Lead(Pb), Cadmium(Cd), Mercury(Hg), Hexavalent Chromium (Cr(VI)), Polybrominated Biphenyls (PBBs), Polybrominated, Diphenyl Ethers(PBDEs)

1.Shell

Part No.	Part Description	Test Items	XRF Screening Result(mg/kg)	Chemical Test Result(mg/kg)	Conclusion
1	Black plastic bracket	Pb	BL	/	Pass
		Cd	BL	/	
		Hg	BL	/	
		Cr(Cr(VI))	BL	/	
		Br(PBBs&PBDEs)	BL	/	
2	Golden metal nut of black plastic bracket	Pb	OL	21030 ^{#1}	Pass
		Cd	IN	16	
		Hg	BL	/	
		Cr(Cr(VI))	BL	/	
		Br(PBBs&PBDEs)	/	/	
3	Transparent plastic sheet of black plastic bracket	Pb	BL	/	Pass
		Cd	BL	/	
		Hg	BL	/	
		Cr(Cr(VI))	BL	/	
		Br(PBBs&PBDEs)	BL	/	
4	Black plastic shell	Pb	BL	/	Pass
		Cd	BL	/	
		Hg	BL	/	
		Cr(Cr(VI))	BL	/	
		Br(PBBs&PBDEs)	BL	/	
5	Transparent plastic of black plastic shell	Pb	BL	/	Pass
		Cd	BL	/	
		Hg	BL	/	
		Cr(Cr(VI))	BL	/	
		Br(PBBs&PBDEs)	BL	/	
6	Golden plastic shell	Pb	BL	/	Pass
		Cd	BL	/	
		Hg	BL	/	
		Cr(Cr(VI))	BL	/	
		Br(PBBs&PBDEs)	BL	/	
7	Black plastic plate	Pb	BL	/	Pass
		Cd	BL	/	
		Hg	BL	/	
		Cr(Cr(VI))	BL	/	
		Br(PBBs&PBDEs)	BL	/	

8	Black plastic pedestal	Pb	BL	/	Pass
		Cd	BL	/	
		Hg	BL	/	
		Cr(Cr(VI))	BL	/	
		Br(PBBs&PBDEs)	BL	/	
9	Cupreous metal strip	Pb	BL	/	Pass
		Cd	BL	/	
		Hg	BL	/	
		Cr(Cr(VI))	IN	N.D.	
		Br(PBBs&PBDEs)	/	/	
10	Cupreous metal strip (small)	Pb	BL	/	Pass
		Cd	BL	/	
		Hg	BL	/	
		Cr(Cr(VI))	IN	N.D.	
		Br(PBBs&PBDEs)	/	/	
11	Transparent plastic sheet	Pb	BL	/	Pass
		Cd	BL	/	
		Hg	BL	/	
		Cr(Cr(VI))	BL	/	
		Br(PBBs&PBDEs)	BL	/	
12	Black plastic	Pb	BL	/	Pass
		Cd	BL	/	
		Hg	BL	/	
		Cr(Cr(VI))	BL	/	
		Br(PBBs&PBDEs)	BL	/	
13	Silvery metal card slot	Pb	BL	/	Pass
		Cd	BL	/	
		Hg	BL	/	
		Cr(Cr(VI))	IN	N.D.	
		Br(PBBs&PBDEs)	/	/	
14	Black rubber	Pb	BL	/	Pass
		Cd	BL	/	
		Hg	BL	/	
		Cr(Cr(VI))	BL	/	
		Br(PBBs&PBDEs)	BL	/	
15	Silver metal screw(big)	Pb	BL	/	Pass
		Cd	BL	/	
		Hg	BL	/	
		Cr(Cr(VI))	BL	/	
		Br(PBBs&PBDEs)	/	/	

16	Silver metal screw(small)	Pb	BL	/	Pass
		Cd	BL	/	
		Hg	BL	/	
		Cr(Cr(VI))	BL	/	
		Br(PBBs&PBDEs)	/	/	
17	Golden metal screw	Pb	BL	/	Pass
		Cd	BL	/	
		Hg	BL	/	
		Cr(Cr(VI))	BL	/	
		Br(PBBs&PBDEs)	/	/	

2. Screen

18	Black glass screen	Pb	BL	/	Pass
		Cd	BL	/	
		Hg	BL	/	
		Cr(Cr(VI))	BL	/	
		Br(PBBs&PBDEs)	BL	/	
19	Glass screen	Pb	BL	/	Pass
		Cd	BL	/	
		Hg	BL	/	
		Cr(Cr(VI))	BL	/	
		Br(PBBs&PBDEs)	BL	/	
20	Silvery plastic sheet of screen	Pb	BL	/	Pass
		Cd	BL	/	
		Hg	BL	/	
		Cr(Cr(VI))	BL	/	
		Br(PBBs&PBDEs)	BL	/	
21	Black tape of screen	Pb	BL	/	Pass
		Cd	BL	/	
		Hg	BL	/	
		Cr(Cr(VI))	BL	/	
		Br(PBBs&PBDEs)	BL	/	
22	FPC of screen	Pb	BL	/	Pass
		Cd	BL	/	
		Hg	BL	/	
		Cr(Cr(VI))	BL	/	
		Br(PBBs&PBDEs)	BL	/	
23	LED of screen	Pb	BL	/	Pass
		Cd	BL	/	
		Hg	BL	/	
		Cr(Cr(VI))	BL	/	
		Br(PBBs&PBDEs)	BL	/	

24	White plastic sheet of screen	Pb	BL	/	Pass
		Cd	BL	/	
		Hg	BL	/	
		Cr(Cr(VI))	BL	/	
		Br(PBBs&PBDEs)	BL	/	
25	White frosted flakes of screen	Pb	BL	/	Pass
		Cd	BL	/	
		Hg	BL	/	
		Cr(Cr(VI))	BL	/	
		Br(PBBs&PBDEs)	BL	/	
26	Transparent plastic plate of screen	Pb	BL	/	Pass
		Cd	BL	/	
		Hg	BL	/	
		Cr(Cr(VI))	BL	/	
		Br(PBBs&PBDEs)	BL	/	
27	Silvery reflector of screen	Pb	BL	/	Pass
		Cd	BL	/	
		Hg	BL	/	
		Cr(Cr(VI))	BL	/	
		Br(PBBs&PBDEs)	BL	/	
28	Silvery metal plate of screen	Pb	BL	/	Pass
		Cd	BL	/	
		Hg	BL	/	
		Cr(Cr(VI))	IN	N.D.	
		Br(PBBs&PBDEs)	/	/	
29	White plastic frame of screen	Pb	BL	/	Pass
		Cd	BL	/	
		Hg	BL	/	
		Cr(Cr(VI))	BL	/	
		Br(PBBs&PBDEs)	BL	/	
30	Yellow tape	Pb	BL	/	Pass
		Cd	BL	/	
		Hg	BL	/	
		Cr(Cr(VI))	IN	N.D.	
		Br(PBBs&PBDEs)	BL	/	
31	Yellow FPC	Pb	BL	/	Pass
		Cd	BL	/	
		Hg	BL	/	
		Cr(Cr(VI))	BL	/	
		Br(PBBs&PBDEs)	BL	/	

32	Chip	Pb	BL	/	Pass
		Cd	BL	/	
		Hg	BL	/	
		Cr(Cr(VI))	BL	/	
		Br(PBBs&PBDEs)	BL	/	
33	Black plastic of black interface	Pb	BL	/	Pass
		Cd	BL	/	
		Hg	BL	/	
		Cr(Cr(VI))	BL	/	
		Br(PBBs&PBDEs)	BL	/	
34	Metal plug pin of black interface	Pb	BL	/	Pass
		Cd	BL	/	
		Hg	BL	/	
		Cr(Cr(VI))	BL	/	
		Br(PBBs&PBDEs)	/	/	

3. Camera

35	Silvery metal shell of camera 1	Pb	BL	/	Pass
		Cd	BL	/	
		Hg	BL	/	
		Cr(Cr(VI))	BL	/	
		Br(PBBs&PBDEs)	/	/	
36	Cupreous metal coil of camera 1	Pb	BL	/	Pass
		Cd	BL	/	
		Hg	BL	/	
		Cr(Cr(VI))	BL	/	
		Br(PBBs&PBDEs)	/	/	
37	Lens of camera 1	Pb	BL	/	Pass
		Cd	BL	/	
		Hg	BL	/	
		Cr(Cr(VI))	BL	/	
		Br(PBBs&PBDEs)	BL	/	
38	COMS sensor of camera 1	Pb	BL	/	Pass
		Cd	BL	/	
		Hg	BL	/	
		Cr(Cr(VI))	BL	/	
		Br(PBBs&PBDEs)	BL	/	
39	FPC of camera 1	Pb	BL	/	Pass
		Cd	BL	/	
		Hg	BL	/	
		Cr(Cr(VI))	BL	/	
		Br(PBBs&PBDEs)	BL	/	

40	Black foam of camera 1	Pb	BL	/	Pass
		Cd	BL	/	
		Hg	BL	/	
		Cr(Cr(VI))	BL	/	
		Br(PBBs&PBDEs)	BL	/	
41	Black plastic shell of camera 2	Pb	BL	/	Pass
		Cd	BL	/	
		Hg	BL	/	
		Cr(Cr(VI))	BL	/	
		Br(PBBs&PBDEs)	BL	/	
42	Silvery metal plate of camera 2	Pb	BL	/	Pass
		Cd	BL	/	
		Hg	BL	/	
		Cr(Cr(VI))	BL	/	
		Br(PBBs&PBDEs)	/	/	
43	Lens of camera 2	Pb	BL	/	Pass
		Cd	BL	/	
		Hg	BL	/	
		Cr(Cr(VI))	BL	/	
		Br(PBBs&PBDEs)	BL	/	
44	COMS sensor of camera 2	Pb	BL	/	Pass
		Cd	BL	/	
		Hg	BL	/	
		Cr(Cr(VI))	BL	/	
		Br(PBBs&PBDEs)	BL	/	
45	FPC of camera 2	Pb	BL	/	Pass
		Cd	BL	/	
		Hg	BL	/	
		Cr(Cr(VI))	BL	/	
		Br(PBBs&PBDEs)	BL	/	
46	Black foam of camera 2	Pb	BL	/	Pass
		Cd	BL	/	
		Hg	BL	/	
		Cr(Cr(VI))	BL	/	
		Br(PBBs&PBDEs)	BL	/	

4. Speaker

47	Black plastic shell	Pb	BL	/	Pass
		Cd	BL	/	
		Hg	BL	/	
		Cr(Cr(VI))	BL	/	
		Br(PBBs&PBDEs)	BL	/	

48	Golden metal plug pin	Pb	OL	21200 ^{#1}	Pass
		Cd	IN	23	
		Hg	BL	/	
		Cr(Cr(VI))	BL	/	
		Br(PBBs&PBDEs)	/	/	
49	FPC	Pb	BL	/	Pass
		Cd	BL	/	
		Hg	BL	/	
		Cr(Cr(VI))	BL	/	
		Br(PBBs&PBDEs)	BL	/	
50	Silvery metal frame	Pb	BL	/	Pass
		Cd	BL	/	
		Hg	BL	/	
		Cr(Cr(VI))	BL	/	
		Br(PBBs&PBDEs)	/	/	
51	Black plastic border	Pb	BL	/	Pass
		Cd	BL	/	
		Hg	BL	/	
		Cr(Cr(VI))	BL	/	
		Br(PBBs&PBDEs)	BL	/	
52	Silvery metal shell	Pb	BL	/	Pass
		Cd	BL	/	
		Hg	BL	/	
		Cr(Cr(VI))	BL	/	
		Br(PBBs&PBDEs)	/	/	
53	Silvery magnet	Pb	BL	/	Pass
		Cd	BL	/	
		Hg	BL	/	
		Cr(Cr(VI))	BL	/	
		Br(PBBs&PBDEs)	/	/	
54	Tin solder	Pb	BL	/	Pass
		Cd	BL	/	
		Hg	BL	/	
		Cr(Cr(VI))	BL	/	
		Br(PBBs&PBDEs)	/	/	
55	Sound basin	Pb	BL	/	Pass
		Cd	BL	/	
		Hg	BL	/	
		Cr(Cr(VI))	BL	/	
		Br(PBBs&PBDEs)	BL	/	

56	Voice coil	Pb	BL	/	Pass
		Cd	BL	/	
		Hg	BL	/	
		Cr(Cr(VI))	BL	/	
		Br(PBBs&PBDEs)	/	/	
57	Yellow LED	Pb	BL	/	Pass
		Cd	BL	/	
		Hg	BL	/	
		Cr(Cr(VI))	BL	/	
		Br(PBBs&PBDEs)	BL	/	

5. Vibration motor

58	Silvery metal shell of vibration motor	Pb	BL	/	Pass
		Cd	BL	/	
		Hg	BL	/	
		Cr(Cr(VI))	BL	/	
		Br(PBBs&PBDEs)	/	/	
59	Black foam of vibration motor	Pb	BL	/	Pass
		Cd	BL	/	
		Hg	BL	/	
		Cr(Cr(VI))	BL	/	
		Br(PBBs&PBDEs)	BL	/	
60	Magnet of vibration motor	Pb	BL	/	Pass
		Cd	BL	/	
		Hg	BL	/	
		Cr(Cr(VI))	BL	/	
		Br(PBBs&PBDEs)	/	/	
61	PCB of vibration motor	Pb	BL	/	Pass
		Cd	BL	/	
		Hg	BL	/	
		Cr(Cr(VI))	BL	/	
		Br(PBBs&PBDEs)	BL	/	
62	Silvery metal block of vibration motor	Pb	BL	/	Pass
		Cd	BL	/	
		Hg	BL	/	
		Cr(Cr(VI))	BL	/	
		Br(PBBs&PBDEs)	/	/	
63	Cupreous metal coil of vibration motor	Pb	BL	/	Pass
		Cd	BL	/	
		Hg	BL	/	
		Cr(Cr(VI))	BL	/	
		Br(PBBs&PBDEs)	/	/	

64	Cupreous nut of vibration motor	Pb	BL	/	Pass
		Cd	BL	/	
		Hg	BL	/	
		Cr(Cr(VI))	BL	/	
		Br(PBBs&PBDEs)	/	/	
65	Red wire jacket of vibration motor	Pb	BL	/	Pass
		Cd	BL	/	
		Hg	BL	/	
		Cr(Cr(VI))	BL	/	
		Br(PBBs&PBDEs)	BL	/	
66	Blue wire jacket of vibration motor	Pb	BL	/	Pass
		Cd	BL	/	
		Hg	BL	/	
		Cr(Cr(VI))	BL	/	
		Br(PBBs&PBDEs)	BL	/	
67	Core of wire of vibration motor	Pb	BL	/	Pass
		Cd	BL	/	
		Hg	BL	/	
		Cr(Cr(VI))	BL	/	
		Br(PBBs&PBDEs)	/	/	

6. FPC

68	Black FPC	Pb	BL	/	Pass
		Cd	BL	/	
		Hg	BL	/	
		Cr(Cr(VI))	BL	/	
		Br(PBBs&PBDEs)	BL	/	
69	Brown FPC	Pb	BL	/	Pass
		Cd	BL	/	
		Hg	BL	/	
		Cr(Cr(VI))	BL	/	
		Br(PBBs&PBDEs)	BL	/	

7. PCBA

70	Silvery metal shell 1	Pb	BL	/	Pass
		Cd	BL	/	
		Hg	BL	/	
		Cr(Cr(VI))	BL	/	
		Br(PBBs&PBDEs)	/	/	

71	White label of silvery metal shell 1	Pb	BL	/	Pass
		Cd	BL	/	
		Hg	BL	/	
		Cr(Cr(VI))	BL	/	
		Br(PBBs&PBDEs)	BL	/	
72	Silvery foam of silvery metal shell 1	Pb	BL	/	Pass
		Cd	BL	/	
		Hg	BL	/	
		Cr(Cr(VI))	BL	/	
		Br(PBBs&PBDEs)	BL	/	
73	Silvery metal shell 2	Pb	BL	/	Pass
		Cd	BL	/	
		Hg	BL	/	
		Cr(Cr(VI))	BL	/	
		Br(PBBs&PBDEs)	/	/	
74	Green PCB	Pb	BL	/	Pass
		Cd	BL	/	
		Hg	BL	/	
		Cr(Cr(VI))	BL	/	
		Br(PBBs&PBDEs)	BL	/	
75	SMD Chip 1	Pb	BL	/	Pass
		Cd	BL	/	
		Hg	BL	/	
		Cr(Cr(VI))	BL	/	
		Br(PBBs&PBDEs)	BL	/	
76	SMD Chip 2	Pb	BL	/	Pass
		Cd	BL	/	
		Hg	BL	/	
		Cr(Cr(VI))	BL	/	
		Br(PBBs&PBDEs)	BL	/	
77	SMD resistor	Pb	BL	/	Pass
		Cd	BL	/	
		Hg	BL	/	
		Cr(Cr(VI))	BL	/	
		Br(PBBs&PBDEs)	BL	/	
78	SMD capacitor	Pb	BL	/	Pass
		Cd	BL	/	
		Hg	BL	/	
		Cr(Cr(VI))	BL	/	
		Br(PBBs&PBDEs)	BL	/	

79	SMD inductor	Pb	BL	/	Pass
		Cd	BL	/	
		Hg	BL	/	
		Cr(Cr(VI))	BL	/	
		Br(PBBs&PBDEs)	/	/	
80	SMD crystal	Pb	BL	/	Pass
		Cd	BL	/	
		Hg	BL	/	
		Cr(Cr(VI))	BL	/	
		Br(PBBs&PBDEs)	BL	/	
81	SMD LED	Pb	BL	/	Pass
		Cd	BL	/	
		Hg	BL	/	
		Cr(Cr(VI))	BL	/	
		Br(PBBs&PBDEs)	BL	/	
82	SMD diode	Pb	BL	/	Pass
		Cd	BL	/	
		Hg	BL	/	
		Cr(Cr(VI))	BL	/	
		Br(PBBs&PBDEs)	BL	/	
83	Silvery electronic components	Pb	BL	/	Pass
		Cd	BL	/	
		Hg	BL	/	
		Cr(Cr(VI))	BL	/	
		Br(PBBs&PBDEs)	BL	/	
84	Black electronic components	Pb	BL	/	Pass
		Cd	BL	/	
		Hg	BL	/	
		Cr(Cr(VI))	BL	/	
		Br(PBBs&PBDEs)	BL	/	
85	Black plastic of black interface	Pb	BL	/	Pass
		Cd	BL	/	
		Hg	BL	/	
		Cr(Cr(VI))	BL	/	
		Br(PBBs&PBDEs)	BL	/	
86	Metal plug pin of black interface	Pb	BL	/	Pass
		Cd	BL	/	
		Hg	BL	/	
		Cr(Cr(VI))	BL	/	
		Br(PBBs&PBDEs)	/	/	

87	Silvery metal shell of SIM card slot	Pb	BL	/	Pass
		Cd	BL	/	
		Hg	BL	/	
		Cr(Cr(VI))	IN	N.D.	
		Br(PBBs&PBDEs)	/	/	
88	Black plastic of SIM card slot	Pb	BL	/	Pass
		Cd	BL	/	
		Hg	BL	/	
		Cr(Cr(VI))	BL	/	
		Br(PBBs&PBDEs)	BL	/	
89	Metal contact pin of SIM card slot	Pb	BL	/	Pass
		Cd	BL	/	
		Hg	BL	/	
		Cr(Cr(VI))	BL	/	
		Br(PBBs&PBDEs)	/	/	
90	Black plastic of antenna interface	Pb	BL	/	Pass
		Cd	BL	/	
		Hg	BL	/	
		Cr(Cr(VI))	BL	/	
		Br(PBBs&PBDEs)	BL	/	
91	Silvery metal shell of antenna interface	Pb	BL	/	Pass
		Cd	BL	/	
		Hg	BL	/	
		Cr(Cr(VI))	BL	/	
		Br(PBBs&PBDEs)	/	/	
92	Silver metal contact pins	Pb	BL	/	Pass
		Cd	BL	/	
		Hg	BL	/	
		Cr(Cr(VI))	IN	N.D.	
		Br(PBBs&PBDEs)	/	/	
93	Silvery metal shell of silvery type-c interface	Pb	BL	/	Pass
		Cd	BL	/	
		Hg	BL	/	
		Cr(Cr(VI))	IN	N.D.	
		Br(PBBs&PBDEs)	/	/	
94	Black plastic of silvery type-c interface	Pb	BL	/	Pass
		Cd	BL	/	
		Hg	BL	/	
		Cr(Cr(VI))	BL	/	
		Br(PBBs&PBDEs)	BL	/	

95	Metal plug pin of silvery type-c interface	Pb	BL	/	Pass
		Cd	BL	/	
		Hg	BL	/	
		Cr(Cr(VI))	BL	/	
		Br(PBBs&PBDEs)	/	/	
96	Yellow FPC	Pb	BL	/	Pass
		Cd	BL	/	
		Hg	BL	/	
		Cr(Cr(VI))	BL	/	
		Br(PBBs&PBDEs)	BL	/	
97	Silvery metal plate	Pb	BL	/	Pass
		Cd	BL	/	
		Hg	BL	/	
		Cr(Cr(VI))	IN	N.D.	
		Br(PBBs&PBDEs)	/	/	

8. Battery

98	Yellow tape	Pb	BL	/	Pass
		Cd	BL	/	
		Hg	BL	/	
		Cr(Cr(VI))	BL	/	
		Br(PBBs&PBDEs)	BL	/	
99	Transparent double-sided adhesive	Pb	BL	/	Pass
		Cd	BL	/	
		Hg	BL	/	
		Cr(Cr(VI))	BL	/	
		Br(PBBs&PBDEs)	BL	/	
100	Yellow PCB	Pb	BL	/	Pass
		Cd	BL	/	
		Hg	BL	/	
		Cr(Cr(VI))	BL	/	
		Br(PBBs&PBDEs)	BL	/	
101	Yellow FPC	Pb	BL	/	Pass
		Cd	BL	/	
		Hg	BL	/	
		Cr(Cr(VI))	BL	/	
		Br(PBBs&PBDEs)	BL	/	
102	Chip	Pb	BL	/	Pass
		Cd	BL	/	
		Hg	BL	/	
		Cr(Cr(VI))	BL	/	
		Br(PBBs&PBDEs)	BL	/	

9. Adapter 1

103	White plastic shell	Pb	BL	/	Pass
		Cd	BL	/	
		Hg	BL	/	
		Cr(Cr(VI))	BL	/	
		Br(PBBs&PBDEs)	BL	/	
104	White plastic clasp	Pb	BL	/	Pass
		Cd	BL	/	
		Hg	BL	/	
		Cr(Cr(VI))	BL	/	
		Br(PBBs&PBDEs)	IN	N.D.	
105	Silvery metal block	Pb	OL	17430 ^{#1}	Pass
		Cd	IN	N.D.	
		Hg	BL	/	
		Cr(Cr(VI))	BL	/	
		Br(PBBs&PBDEs)	/	/	
106	Silvery metal contact pin	Pb	BL	/	Pass
		Cd	BL	/	
		Hg	BL	/	
		Cr(Cr(VI))	IN	N.D.	
		Br(PBBs&PBDEs)	/	/	
107	Silvery metal screw 1	Pb	BL	/	Pass
		Cd	BL	/	
		Hg	BL	/	
		Cr(Cr(VI))	BL	/	
		Br(PBBs&PBDEs)	/	/	
108	Silvery metal screw 2	Pb	BL	/	Pass
		Cd	BL	/	
		Hg	BL	/	
		Cr(Cr(VI))	BL	/	
		Br(PBBs&PBDEs)	/	/	
109	Beige PCB	Pb	BL	/	Pass
		Cd	BL	/	
		Hg	BL	/	
		Cr(Cr(VI))	BL	/	
		Br(PBBs&PBDEs)	IN	N.D.	
110	SMD Chip	Pb	BL	/	Pass
		Cd	BL	/	
		Hg	BL	/	
		Cr(Cr(VI))	BL	/	
		Br(PBBs&PBDEs)	BL	/	

111	SMD resistor	Pb	BL	/	Pass
		Cd	BL	/	
		Hg	BL	/	
		Cr(Cr(VI))	BL	/	
		Br(PBBs&PBDEs)	BL	/	
112	SMD capacitor	Pb	BL	/	Pass
		Cd	BL	/	
		Hg	BL	/	
		Cr(Cr(VI))	BL	/	
		Br(PBBs&PBDEs)	BL	/	
113	SMD diode	Pb	BL	/	Pass
		Cd	BL	/	
		Hg	BL	/	
		Cr(Cr(VI))	BL	/	
		Br(PBBs&PBDEs)	BL	/	
114	Silvery metal shell of silver USB interface	Pb	BL	/	Pass
		Cd	BL	/	
		Hg	BL	/	
		Cr(Cr(VI))	BL	/	
		Br(PBBs&PBDEs)	/	/	
115	White plastic of silver USB interface	Pb	BL	/	Pass
		Cd	BL	/	
		Hg	BL	/	
		Cr(Cr(VI))	BL	/	
		Br(PBBs&PBDEs)	IN	N.D.	
116	Metal plug pin of silver USB interface	Pb	BL	/	Pass
		Cd	BL	/	
		Hg	BL	/	
		Cr(Cr(VI))	BL	/	
		Br(PBBs&PBDEs)	/	/	
117	Black plastic sheet	Pb	BL	/	Pass
		Cd	BL	/	
		Hg	BL	/	
		Cr(Cr(VI))	BL	/	
		Br(PBBs&PBDEs)	BL	/	
118	White colloid	Pb	BL	/	Pass
		Cd	BL	/	
		Hg	BL	/	
		Cr(Cr(VI))	BL	/	
		Br(PBBs&PBDEs)	BL	/	

119	Plastic skeleton of REV1 transformer	Pb	BL	/	Pass
		Cd	BL	/	
		Hg	BL	/	
		Cr(Cr(VI))	BL	/	
		Br(PBBs&PBDEs)	BL	/	
120	Magnet core of REV1 transformer	Pb	BL	/	Pass
		Cd	BL	/	
		Hg	BL	/	
		Cr(Cr(VI))	BL	/	
		Br(PBBs&PBDEs)	/	/	
121	Cupreous metal coil of REV1 transformer	Pb	BL	/	Pass
		Cd	BL	/	
		Hg	BL	/	
		Cr(Cr(VI))	BL	/	
		Br(PBBs&PBDEs)	/	/	
122	Varnished wire of REV1 transformer	Pb	BL	/	Pass
		Cd	BL	/	
		Hg	BL	/	
		Cr(Cr(VI))	BL	/	
		Br(PBBs&PBDEs)	BL	/	
123	Blue tape of REV1 transformer	Pb	BL	/	Pass
		Cd	BL	/	
		Hg	BL	/	
		Cr(Cr(VI))	BL	/	
		Br(PBBs&PBDEs)	BL	/	
124	Transparent casing tube of REV1 transformer	Pb	BL	/	Pass
		Cd	BL	/	
		Hg	BL	/	
		Cr(Cr(VI))	BL	/	
		Br(PBBs&PBDEs)	BL	/	
125	Yellow tape of REV1 transformer	Pb	BL	/	Pass
		Cd	BL	/	
		Hg	BL	/	
		Cr(Cr(VI))	BL	/	
		Br(PBBs&PBDEs)	BL	/	
126	Black casing tube of black color ring inductor	Pb	BL	/	Pass
		Cd	BL	/	
		Hg	BL	/	
		Cr(Cr(VI))	BL	/	
		Br(PBBs&PBDEs)	BL	/	

127	Black body of black color ring inductor	Pb	BL	/	Pass
		Cd	BL	/	
		Hg	BL	/	
		Cr(Cr(VI))	BL	/	
		Br(PBBs&PBDEs)	/	/	
128	Metal pin of black color ring inductor	Pb	BL	/	Pass
		Cd	BL	/	
		Hg	BL	/	
		Cr(Cr(VI))	BL	/	
		Br(PBBs&PBDEs)	/	/	
129	Aluminum shell of electrolytic capacitor	Pb	BL	/	Pass
		Cd	BL	/	
		Hg	BL	/	
		Cr(Cr(VI))	BL	/	
		Br(PBBs&PBDEs)	/	/	
130	Anode foil of electrolytic capacitor	Pb	BL	/	Pass
		Cd	BL	/	
		Hg	BL	/	
		Cr(Cr(VI))	BL	/	
		Br(PBBs&PBDEs)	/	/	
131	Cathode foil of electrolytic capacitor	Pb	BL	/	Pass
		Cd	BL	/	
		Hg	BL	/	
		Cr(Cr(VI))	BL	/	
		Br(PBBs&PBDEs)	/	/	
132	Electrolytic paper of electrolytic capacitor	Pb	BL	/	Pass
		Cd	BL	/	
		Hg	BL	/	
		Cr(Cr(VI))	BL	/	
		Br(PBBs&PBDEs)	BL	/	
133	Rubber blanket of electrolytic capacitor	Pb	BL	/	Pass
		Cd	BL	/	
		Hg	BL	/	
		Cr(Cr(VI))	BL	/	
		Br(PBBs&PBDEs)	BL	/	
134	Electrode pin of electrolytic capacitor	Pb	BL	/	Pass
		Cd	BL	/	
		Hg	BL	/	
		Cr(Cr(VI))	BL	/	
		Br(PBBs&PBDEs)	/	/	

135	Plastic jacket of electrolytic capacitor	Pb	BL	/	Pass
		Cd	BL	/	
		Hg	BL	/	
		Cr(Cr(VI))	BL	/	
		Br(PBBs&PBDEs)	BL	/	
136	Green body of L1 color ring inductance	Pb	BL	/	Pass
		Cd	BL	/	
		Hg	BL	/	
		Cr(Cr(VI))	BL	/	
		Br(PBBs&PBDEs)	/	/	
137	Blue body of CY1 capacitor	Pb	BL	/	Pass
		Cd	BL	/	
		Hg	BL	/	
		Cr(Cr(VI))	BL	/	
		Br(PBBs&PBDEs)	BL	/	
138	Aluminum shell of C5 electrolytic capacitor	Pb	BL	/	Pass
		Cd	BL	/	
		Hg	BL	/	
		Cr(Cr(VI))	BL	/	
		Br(PBBs&PBDEs)	/	/	
139	Anode foil of C5 electrolytic capacitor	Pb	BL	/	Pass
		Cd	BL	/	
		Hg	BL	/	
		Cr(Cr(VI))	BL	/	
		Br(PBBs&PBDEs)	/	/	
140	Cathode foil of C5 electrolytic capacitor	Pb	BL	/	Pass
		Cd	BL	/	
		Hg	BL	/	
		Cr(Cr(VI))	BL	/	
		Br(PBBs&PBDEs)	/	/	
141	Electrolytic paper of C5 electrolytic capacitor	Pb	BL	/	Pass
		Cd	BL	/	
		Hg	BL	/	
		Cr(Cr(VI))	BL	/	
		Br(PBBs&PBDEs)	BL	/	
142	Rubber blanket of C5 electrolytic capacitor	Pb	BL	/	Pass
		Cd	BL	/	
		Hg	BL	/	
		Cr(Cr(VI))	BL	/	
		Br(PBBs&PBDEs)	BL	/	

143	Electrode pin of C5 electrolytic capacitor	Pb	BL	/	Pass
		Cd	BL	/	
		Hg	BL	/	
		Cr(Cr(VI))	BL	/	
		Br(PBBs&PBDEs)	/	/	
144	Tin solder	Pb	BL	/	Pass
		Cd	BL	/	
		Hg	BL	/	
		Cr(Cr(VI))	BL	/	
		Br(PBBs&PBDEs)	/	/	

10. Adapter 2

145	White plastic shell	Pb	BL	/	Pass
		Cd	BL	/	
		Hg	BL	/	
		Cr(Cr(VI))	BL	/	
		Br(PBBs&PBDEs)	BL	/	
146	White plastic pedestal	Pb	BL	/	Pass
		Cd	BL	/	
		Hg	BL	/	
		Cr(Cr(VI))	BL	/	
		Br(PBBs&PBDEs)	BL	/	
147	Silvery metal hat	Pb	BL	/	Pass
		Cd	BL	/	
		Hg	BL	/	
		Cr(Cr(VI))	BL	/	
		Br(PBBs&PBDEs)	/	/	
148	Silvery metal strip	Pb	BL	/	Pass
		Cd	BL	/	
		Hg	BL	/	
		Cr(Cr(VI))	BL	/	
		Br(PBBs&PBDEs)	/	/	
149	Beige PCB	Pb	BL	/	Pass
		Cd	BL	/	
		Hg	BL	/	
		Cr(Cr(VI))	BL	/	
		Br(PBBs&PBDEs)	IN	N.D.	
150	SMD Chip	Pb	BL	/	Pass
		Cd	BL	/	
		Hg	BL	/	
		Cr(Cr(VI))	BL	/	
		Br(PBBs&PBDEs)	BL	/	

151	SMD resistor	Pb	BL	/	Pass
		Cd	BL	/	
		Hg	BL	/	
		Cr(Cr(VI))	BL	/	
		Br(PBBs&PBDEs)	BL	/	
152	SMD capacitor	Pb	BL	/	Pass
		Cd	BL	/	
		Hg	BL	/	
		Cr(Cr(VI))	BL	/	
		Br(PBBs&PBDEs)	BL	/	
153	SMD diode	Pb	BL	/	Pass
		Cd	BL	/	
		Hg	BL	/	
		Cr(Cr(VI))	BL	/	
		Br(PBBs&PBDEs)	BL	/	
154	Aluminum shell of C5 electrolytic capacitor	Pb	BL	/	Pass
		Cd	BL	/	
		Hg	BL	/	
		Cr(Cr(VI))	BL	/	
		Br(PBBs&PBDEs)	/	/	
155	Anode foil of C5 electrolytic capacitor	Pb	BL	/	Pass
		Cd	BL	/	
		Hg	BL	/	
		Cr(Cr(VI))	BL	/	
		Br(PBBs&PBDEs)	/	/	
156	Cathode foil of C5 electrolytic capacitor	Pb	BL	/	Pass
		Cd	BL	/	
		Hg	BL	/	
		Cr(Cr(VI))	BL	/	
		Br(PBBs&PBDEs)	/	/	
157	Electrolytic paper of C5 electrolytic capacitor	Pb	BL	/	Pass
		Cd	BL	/	
		Hg	BL	/	
		Cr(Cr(VI))	BL	/	
		Br(PBBs&PBDEs)	BL	/	
158	Rubber blanket of C5 electrolytic capacitor	Pb	BL	/	Pass
		Cd	BL	/	
		Hg	BL	/	
		Cr(Cr(VI))	BL	/	
		Br(PBBs&PBDEs)	BL	/	

159	Electrode pin of C5 electrolytic capacitor	Pb	BL	/	Pass
		Cd	BL	/	
		Hg	BL	/	
		Cr(Cr(VI))	BL	/	
		Br(PBBs&PBDEs)	/	/	
160	Green plastic jacket of C5 electrolytic capacitor	Pb	BL	/	Pass
		Cd	BL	/	
		Hg	BL	/	
		Cr(Cr(VI))	BL	/	
		Br(PBBs&PBDEs)	BL	/	
161	Silvery metal shell of USB interface	Pb	BL	/	Pass
		Cd	BL	/	
		Hg	BL	/	
		Cr(Cr(VI))	BL	/	
		Br(PBBs&PBDEs)	/	/	
162	White plastic of USB interface	Pb	BL	/	Pass
		Cd	BL	/	
		Hg	BL	/	
		Cr(Cr(VI))	BL	/	
		Br(PBBs&PBDEs)	BL	/	
163	Metal plug pin of USB interface	Pb	BL	/	Pass
		Cd	BL	/	
		Hg	BL	/	
		Cr(Cr(VI))	BL	/	
		Br(PBBs&PBDEs)	/	/	
164	Black plastic sheet	Pb	BL	/	Pass
		Cd	BL	/	
		Hg	BL	/	
		Cr(Cr(VI))	BL	/	
		Br(PBBs&PBDEs)	BL	/	
165	White colloid	Pb	BL	/	Pass
		Cd	BL	/	
		Hg	BL	/	
		Cr(Cr(VI))	BL	/	
		Br(PBBs&PBDEs)	BL	/	
166	Plastic skeleton of REV1 transformer	Pb	BL	/	Pass
		Cd	BL	/	
		Hg	BL	/	
		Cr(Cr(VI))	BL	/	
		Br(PBBs&PBDEs)	BL	/	

167	Magnet core of REV1 transformer	Pb	BL	/	Pass
		Cd	BL	/	
		Hg	BL	/	
		Cr(Cr(VI))	BL	/	
		Br(PBBs&PBDEs)	/	/	
168	Cupreous metal coil of REV1 transformer	Pb	BL	/	Pass
		Cd	BL	/	
		Hg	BL	/	
		Cr(Cr(VI))	BL	/	
		Br(PBBs&PBDEs)	/	/	
169	Varnished wire of REV1 transformer	Pb	BL	/	Pass
		Cd	BL	/	
		Hg	BL	/	
		Cr(Cr(VI))	BL	/	
		Br(PBBs&PBDEs)	/	/	
170	Blue tape of REV1 transformer	Pb	BL	/	Pass
		Cd	BL	/	
		Hg	BL	/	
		Cr(Cr(VI))	BL	/	
		Br(PBBs&PBDEs)	BL	/	
171	Transparent casing tube of REV1 transformer	Pb	BL	/	Pass
		Cd	BL	/	
		Hg	BL	/	
		Cr(Cr(VI))	BL	/	
		Br(PBBs&PBDEs)	BL	/	
172	Yellow tape of REV1 transformer	Pb	BL	/	Pass
		Cd	BL	/	
		Hg	BL	/	
		Cr(Cr(VI))	BL	/	
		Br(PBBs&PBDEs)	BL	/	
173	Aluminum shell of electrolytic capacitor	Pb	BL	/	Pass
		Cd	BL	/	
		Hg	BL	/	
		Cr(Cr(VI))	BL	/	
		Br(PBBs&PBDEs)	/	/	
174	Anode foil of electrolytic capacitor	Pb	BL	/	Pass
		Cd	BL	/	
		Hg	BL	/	
		Cr(Cr(VI))	BL	/	
		Br(PBBs&PBDEs)	/	/	

175	Cathode foil of electrolytic capacitor	Pb	BL	/	Pass
		Cd	BL	/	
		Hg	BL	/	
		Cr(Cr(VI))	BL	/	
		Br(PBBs&PBDEs)	/	/	
176	Electrolytic paper of electrolytic capacitor	Pb	BL	/	Pass
		Cd	BL	/	
		Hg	BL	/	
		Cr(Cr(VI))	BL	/	
		Br(PBBs&PBDEs)	BL	/	
177	Rubber blanket of electrolytic capacitor	Pb	BL	/	Pass
		Cd	BL	/	
		Hg	BL	/	
		Cr(Cr(VI))	BL	/	
		Br(PBBs&PBDEs)	BL	/	
178	Electrode pin of electrolytic capacitor	Pb	BL	/	Pass
		Cd	BL	/	
		Hg	BL	/	
		Cr(Cr(VI))	BL	/	
		Br(PBBs&PBDEs)	/	/	
179	Black plastic jacket of electrolytic capacitor	Pb	BL	/	Pass
		Cd	BL	/	
		Hg	BL	/	
		Cr(Cr(VI))	BL	/	
		Br(PBBs&PBDEs)	BL	/	
180	Black casing tube of black color ring inductor	Pb	BL	/	Pass
		Cd	BL	/	
		Hg	BL	/	
		Cr(Cr(VI))	BL	/	
		Br(PBBs&PBDEs)	BL	/	
181	Black body of black color ring inductor	Pb	BL	/	Pass
		Cd	BL	/	
		Hg	BL	/	
		Cr(Cr(VI))	BL	/	
		Br(PBBs&PBDEs)	BL	/	
182	Metal pin of black color ring inductor	Pb	BL	/	Pass
		Cd	BL	/	
		Hg	BL	/	
		Cr(Cr(VI))	BL	/	
		Br(PBBs&PBDEs)	/	/	

183	Aluminum shell of C1 electrolytic capacitor	Pb	BL	/	Pass
		Cd	BL	/	
		Hg	BL	/	
		Cr(Cr(VI))	BL	/	
		Br(PBBs&PBDEs)	/	/	
184	Anode foil of C1 electrolytic capacitor	Pb	BL	/	Pass
		Cd	BL	/	
		Hg	BL	/	
		Cr(Cr(VI))	BL	/	
		Br(PBBs&PBDEs)	/	/	
185	Cathode foil of C1 electrolytic capacitor	Pb	BL	/	Pass
		Cd	BL	/	
		Hg	BL	/	
		Cr(Cr(VI))	BL	/	
		Br(PBBs&PBDEs)	/	/	
186	Electrolytic paper of C1 electrolytic capacitor	Pb	BL	/	Pass
		Cd	BL	/	
		Hg	BL	/	
		Cr(Cr(VI))	BL	/	
		Br(PBBs&PBDEs)	BL	/	
187	Rubber blanket of C1 electrolytic capacitor	Pb	BL	/	Pass
		Cd	BL	/	
		Hg	BL	/	
		Cr(Cr(VI))	BL	/	
		Br(PBBs&PBDEs)	BL	/	
188	Electrode pin of C1 electrolytic capacitor	Pb	BL	/	Pass
		Cd	BL	/	
		Hg	BL	/	
		Cr(Cr(VI))	BL	/	
		Br(PBBs&PBDEs)	/	/	
189	Plastic jacket of C1 electrolytic capacitor	Pb	BL	/	Pass
		Cd	BL	/	
		Hg	BL	/	
		Cr(Cr(VI))	BL	/	
		Br(PBBs&PBDEs)	BL	/	
190	Green body of L1 color ring inductor	Pb	BL	/	Pass
		Cd	BL	/	
		Hg	BL	/	
		Cr(Cr(VI))	BL	/	
		Br(PBBs&PBDEs)	/	/	

191	Blue body of CY1 capacitor	Pb	BL	/	Pass
		Cd	BL	/	
		Hg	BL	/	
		Cr(Cr(VI))	BL	/	
		Br(PBBs&PBDEs)	BL	/	
192	Aluminum shell of C8 electrolytic capacitor	Pb	BL	/	Pass
		Cd	BL	/	
		Hg	BL	/	
		Cr(Cr(VI))	BL	/	
		Br(PBBs&PBDEs)	/	/	
193	Anode foil of C8 electrolytic capacitor	Pb	BL	/	Pass
		Cd	BL	/	
		Hg	BL	/	
		Cr(Cr(VI))	BL	/	
		Br(PBBs&PBDEs)	/	/	
194	Cathode foil of C8 electrolytic capacitor	Pb	BL	/	Pass
		Cd	BL	/	
		Hg	BL	/	
		Cr(Cr(VI))	BL	/	
		Br(PBBs&PBDEs)	/	/	
195	Electrolytic paper of C8 electrolytic capacitor	Pb	BL	/	Pass
		Cd	BL	/	
		Hg	BL	/	
		Cr(Cr(VI))	BL	/	
		Br(PBBs&PBDEs)	BL	/	
196	Rubber blanket of C8 electrolytic capacitor	Pb	BL	/	Pass
		Cd	BL	/	
		Hg	BL	/	
		Cr(Cr(VI))	BL	/	
		Br(PBBs&PBDEs)	BL	/	
197	Electrode pin of C8 electrolytic capacitor	Pb	BL	/	Pass
		Cd	BL	/	
		Hg	BL	/	
		Cr(Cr(VI))	BL	/	
		Br(PBBs&PBDEs)	/	/	
198	Tin solder	Pb	BL	/	Pass
		Cd	BL	/	
		Hg	BL	/	
		Cr(Cr(VI))	IN	N.D.	
		Br(PBBs&PBDEs)	/	/	

11. Data cable

199	White encapsulation of USB interface	Pb	BL	/	Pass
		Cd	BL	/	
		Hg	BL	/	
		Cr(Cr(VI))	BL	/	
		Br(PBBs&PBDEs)	BL	/	
200	Silvery metal shell of USB interface	Pb	BL	/	Pass
		Cd	BL	/	
		Hg	BL	/	
		Cr(Cr(VI))	BL	/	
		Br(PBBs&PBDEs)	/	/	
201	White plastic of USB interface	Pb	BL	/	Pass
		Cd	BL	/	
		Hg	BL	/	
		Cr(Cr(VI))	BL	/	
		Br(PBBs&PBDEs)	IN	N.D.	
202	Metal plug pin of USB interface	Pb	BL	/	Pass
		Cd	BL	/	
		Hg	BL	/	
		Cr(Cr(VI))	BL	/	
		Br(PBBs&PBDEs)	/	/	
203	Translucent plastic of USB interface	Pb	BL	/	Pass
		Cd	BL	/	
		Hg	BL	/	
		Cr(Cr(VI))	BL	/	
		Br(PBBs&PBDEs)	BL	/	
204	White encapsulation of type-c interface	Pb	BL	/	Pass
		Cd	BL	/	
		Hg	BL	/	
		Cr(Cr(VI))	BL	/	
		Br(PBBs&PBDEs)	BL	/	
205	Silvery metal shell of type-c interface	Pb	BL	/	Pass
		Cd	BL	/	
		Hg	BL	/	
		Cr(Cr(VI))	IN	N.D.	
		Br(PBBs&PBDEs)	/	/	
206	White plastic of type-c interface	Pb	BL	/	Pass
		Cd	BL	/	
		Hg	BL	/	
		Cr(Cr(VI))	BL	/	
		Br(PBBs&PBDEs)	BL	/	

207	Black plastic of type-c interface	Pb	BL	/	Pass
		Cd	BL	/	
		Hg	BL	/	
		Cr(Cr(VI))	BL	/	
		Br(PBBs&PBDEs)	BL	/	
208	PCBA of type-c interface	Pb	BL	/	Pass
		Cd	BL	/	
		Hg	BL	/	
		Cr(Cr(VI))	BL	/	
		Br(PBBs&PBDEs)	IN	N.D.	
209	Metal plug pin of type-c interface	Pb	BL	/	Pass
		Cd	BL	/	
		Hg	BL	/	
		Cr(Cr(VI))	BL	/	
		Br(PBBs&PBDEs)	/	/	
210	White exterior wire jacket	Pb	BL	/	Pass
		Cd	BL	/	
		Hg	BL	/	
		Cr(Cr(VI))	BL	/	
		Br(PBBs&PBDEs)	BL	/	
211	Black wire jacket	Pb	BL	/	Pass
		Cd	BL	/	
		Hg	BL	/	
		Cr(Cr(VI))	BL	/	
		Br(PBBs&PBDEs)	BL	/	
212	White wire jacket	Pb	BL	/	Pass
		Cd	BL	/	
		Hg	BL	/	
		Cr(Cr(VI))	BL	/	
		Br(PBBs&PBDEs)	BL	/	
213	Red wire jacket	Pb	BL	/	Pass
		Cd	BL	/	
		Hg	BL	/	
		Cr(Cr(VI))	BL	/	
		Br(PBBs&PBDEs)	BL	/	
214	Green wire jacket	Pb	BL	/	Pass
		Cd	BL	/	
		Hg	BL	/	
		Cr(Cr(VI))	BL	/	
		Br(PBBs&PBDEs)	BL	/	

215	Core of wire of green wire jacket	Pb	BL	/	Pass
		Cd	BL	/	
		Hg	BL	/	
		Cr(Cr(VI))	BL	/	
		Br(PBBs&PBDEs)	/	/	

12. Headphones

216	White plastic shell	Pb	BL	/	Pass
		Cd	BL	/	
		Hg	BL	/	
		Cr(Cr(VI))	BL	/	
		Br(PBBs&PBDEs)	BL	/	
217	White plastic key shell	Pb	BL	/	Pass
		Cd	BL	/	
		Hg	BL	/	
		Cr(Cr(VI))	BL	/	
		Br(PBBs&PBDEs)	BL	/	
218	Silvery metal shell of speaker	Pb	BL	/	Pass
		Cd	BL	/	
		Hg	BL	/	
		Cr(Cr(VI))	IN	N.D.	
		Br(PBBs&PBDEs)	/	/	
219	White colloid of speaker	Pb	BL	/	Pass
		Cd	BL	/	
		Hg	BL	/	
		Cr(Cr(VI))	BL	/	
		Br(PBBs&PBDEs)	BL	/	
220	Sound basin of speaker	Pb	BL	/	Pass
		Cd	BL	/	
		Hg	BL	/	
		Cr(Cr(VI))	BL	/	
		Br(PBBs&PBDEs)	BL	/	
221	Voice coil of speaker	Pb	BL	/	Pass
		Cd	BL	/	
		Hg	BL	/	
		Cr(Cr(VI))	BL	/	
		Br(PBBs&PBDEs)	/	/	
222	Silvery metal cover of speaker	Pb	BL	/	Pass
		Cd	BL	/	
		Hg	BL	/	
		Cr(Cr(VI))	IN	N.D.	
		Br(PBBs&PBDEs)	/	/	

223	PCBA of speaker	Pb	BL	/	Pass
		Cd	BL	/	
		Hg	BL	/	
		Cr(Cr(VI))	BL	/	
		Br(PBBs&PBDEs)	BL	/	
224	Tin solder of speaker	Pb	BL	/	Pass
		Cd	BL	/	
		Hg	BL	/	
		Cr(Cr(VI))	BL	/	
		Br(PBBs&PBDEs)	/	/	
225	White net of speaker	Pb	BL	/	Pass
		Cd	BL	/	
		Hg	BL	/	
		Cr(Cr(VI))	BL	/	
		Br(PBBs&PBDEs)	BL	/	
226	Magnet of speaker	Pb	BL	/	Pass
		Cd	BL	/	
		Hg	BL	/	
		Cr(Cr(VI))	BL	/	
		Br(PBBs&PBDEs)	/	/	
227	White plastic shell of silvery type-c interface	Pb	BL	/	Pass
		Cd	BL	/	
		Hg	BL	/	
		Cr(Cr(VI))	BL	/	
		Br(PBBs&PBDEs)	BL	/	
228	White encapsulation of silvery type-c interface	Pb	BL	/	Pass
		Cd	BL	/	
		Hg	BL	/	
		Cr(Cr(VI))	BL	/	
		Br(PBBs&PBDEs)	BL	/	
229	Silvery metal shell of silvery type-c interface	Pb	BL	/	Pass
		Cd	BL	/	
		Hg	BL	/	
		Cr(Cr(VI))	IN	N.D.	
		Br(PBBs&PBDEs)	/	/	
230	Black plastic of silvery type-c interface	Pb	BL	/	Pass
		Cd	BL	/	
		Hg	BL	/	
		Cr(Cr(VI))	BL	/	
		Br(PBBs&PBDEs)	BL	/	

231	Metal plug pin of silvery type-c interface	Pb	BL	/	Pass
		Cd	BL	/	
		Hg	BL	/	
		Cr(Cr(VI))	BL	/	
		Br(PBBs&PBDEs)	/	/	
232	PCBA of silvery type-c interface	Pb	BL	/	Pass
		Cd	BL	/	
		Hg	BL	/	
		Cr(Cr(VI))	BL	/	
		Br(PBBs&PBDEs)	IN	N.D.	
233	Tin solder of silvery type-c interface	Pb	BL	/	Pass
		Cd	BL	/	
		Hg	BL	/	
		Cr(Cr(VI))	BL	/	
		Br(PBBs&PBDEs)	/	/	
234	Blue PCB	Pb	BL	/	Pass
		Cd	BL	/	
		Hg	BL	/	
		Cr(Cr(VI))	BL	/	
		Br(PBBs&PBDEs)	BL	/	
235	Silvery metal shrapnel	Pb	BL	/	Pass
		Cd	BL	/	
		Hg	BL	/	
		Cr(Cr(VI))	IN	N.D.	
		Br(PBBs&PBDEs)	/	/	
236	Silver MIC	Pb	BL	/	Pass
		Cd	BL	/	
		Hg	BL	/	
		Cr(Cr(VI))	BL	/	
		Br(PBBs&PBDEs)	BL	/	
237	Tin solder	Pb	BL	/	Pass
		Cd	BL	/	
		Hg	BL	/	
		Cr(Cr(VI))	BL	/	
		Br(PBBs&PBDEs)	/	/	
238	White rubber buckle	Pb	BL	/	Pass
		Cd	BL	/	
		Hg	BL	/	
		Cr(Cr(VI))	BL	/	
		Br(PBBs&PBDEs)	BL	/	

239	White wire jacket	Pb	BL	/	Pass
		Cd	BL	/	
		Hg	BL	/	
		Cr(Cr(VI))	BL	/	
		Br(PBBs&PBDEs)	BL	/	
240	Green metal wire	Pb	BL	/	Pass
		Cd	BL	/	
		Hg	BL	/	
		Cr(Cr(VI))	BL	/	
		Br(PBBs&PBDEs)	/	/	
241	Red wire	Pb	BL	/	Pass
		Cd	BL	/	
		Hg	BL	/	
		Cr(Cr(VI))	BL	/	
		Br(PBBs&PBDEs)	/	/	
242	Blue metal wire	Pb	BL	/	Pass
		Cd	BL	/	
		Hg	BL	/	
		Cr(Cr(VI))	BL	/	
		Br(PBBs&PBDEs)	/	/	
243	Cupreous wire	Pb	BL	/	Pass
		Cd	BL	/	
		Hg	BL	/	
		Cr(Cr(VI))	BL	/	
		Br(PBBs&PBDEs)	/	/	
244	White fiber	Pb	BL	/	Pass
		Cd	BL	/	
		Hg	BL	/	
		Cr(Cr(VI))	BL	/	
		Br(PBBs&PBDEs)	BL	/	

Bis-(2-ethylhexyl) Phthalate (DEHP), Benzyl butyl Phthalate (BBP), Dibutyl Phthalate (DBP) and Diisobutyl Phthalate(DIBP)

Test Items	Result(mg/kg)			
	1	3	4	5
Bis-(2-ethylhexyl) Phthalate (DEHP)	N.D.	N.D.	N.D.	N.D.
Benzyl butyl Phthalate (BBP)	N.D.	N.D.	N.D.	N.D.
Dibutyl Phthalate (DBP)	N.D.	N.D.	N.D.	N.D.
Diisobutyl Phthalate(DIBP)	N.D.	N.D.	N.D.	N.D.
Conclusion	Pass	Pass	Pass	Pass

Test Items	Result(mg/kg)			
	6	7	8	11
Bis-(2-ethylhexyl) Phthalate (DEHP)	N.D.	N.D.	N.D.	N.D.
Benzyl butyl Phthalate (BBP)	N.D.	N.D.	N.D.	N.D.
Dibutyl Phthalate (DBP)	N.D.	N.D.	N.D.	N.D.
Diisobutyl Phthalate(DIBP)	N.D.	N.D.	N.D.	N.D.
Conclusion	Pass	Pass	Pass	Pass

Test Items	Result(mg/kg)			
	12	14	18	19
Bis-(2-ethylhexyl) Phthalate (DEHP)	N.D.	N.D.	N.D.	N.D.
Benzyl butyl Phthalate (BBP)	N.D.	N.D.	N.D.	N.D.
Dibutyl Phthalate (DBP)	N.D.	N.D.	N.D.	N.D.
Diisobutyl Phthalate(DIBP)	N.D.	N.D.	N.D.	N.D.
Conclusion	Pass	Pass	Pass	Pass

Test Items	Result(mg/kg)			
	20	21	22	23
Bis-(2-ethylhexyl) Phthalate (DEHP)	N.D.	N.D.	N.D.	N.D.
Benzyl butyl Phthalate (BBP)	N.D.	N.D.	N.D.	N.D.
Dibutyl Phthalate (DBP)	N.D.	N.D.	N.D.	N.D.
Diisobutyl Phthalate(DIBP)	N.D.	N.D.	N.D.	N.D.
Conclusion	Pass	Pass	Pass	Pass

Test Items	Result(mg/kg)			
	24	25	26	27
Bis-(2-ethylhexyl) Phthalate (DEHP)	N.D.	N.D.	N.D.	N.D.
Benzyl butyl Phthalate (BBP)	N.D.	N.D.	N.D.	N.D.
Dibutyl Phthalate (DBP)	N.D.	N.D.	N.D.	N.D.
Diisobutyl Phthalate(DIBP)	N.D.	N.D.	N.D.	N.D.
Conclusion	Pass	Pass	Pass	Pass

Test Items	Result(mg/kg)			
	29	30	31	32
Bis-(2-ethylhexyl) Phthalate (DEHP)	N.D.	N.D.	N.D.	N.D.
Benzyl butyl Phthalate (BBP)	N.D.	N.D.	N.D.	N.D.
Dibutyl Phthalate (DBP)	N.D.	N.D.	N.D.	N.D.
Diisobutyl Phthalate(DIBP)	N.D.	N.D.	N.D.	N.D.
Conclusion	Pass	Pass	Pass	Pass

Test Items	Result(mg/kg)			
	33	37	38	39
Bis-(2-ethylhexyl) Phthalate (DEHP)	N.D.	N.D.	N.D.	N.D.
Benzyl butyl Phthalate (BBP)	N.D.	N.D.	N.D.	N.D.
Dibutyl Phthalate (DBP)	N.D.	N.D.	N.D.	N.D.
Diisobutyl Phthalate(DIBP)	N.D.	N.D.	N.D.	N.D.
Conclusion	Pass	Pass	Pass	Pass

Test Items	Result(mg/kg)			
	40	41	43	44
Bis-(2-ethylhexyl) Phthalate (DEHP)	N.D.	N.D.	N.D.	N.D.
Benzyl butyl Phthalate (BBP)	N.D.	N.D.	N.D.	N.D.
Dibutyl Phthalate (DBP)	N.D.	N.D.	N.D.	N.D.
Diisobutyl Phthalate(DIBP)	N.D.	N.D.	N.D.	N.D.
Conclusion	Pass	Pass	Pass	Pass

Test Items	Result(mg/kg)			
	45	46	47	49
Bis-(2-ethylhexyl) Phthalate (DEHP)	N.D.	N.D.	N.D.	N.D.
Benzyl butyl Phthalate (BBP)	N.D.	N.D.	N.D.	N.D.
Dibutyl Phthalate (DBP)	N.D.	N.D.	N.D.	N.D.
Diisobutyl Phthalate(DIBP)	N.D.	N.D.	N.D.	N.D.
Conclusion	Pass	Pass	Pass	Pass

Test Items	Result(mg/kg)			
	51	55	57	59
Bis-(2-ethylhexyl) Phthalate (DEHP)	N.D.	N.D.	N.D.	N.D.
Benzyl butyl Phthalate (BBP)	N.D.	N.D.	N.D.	N.D.
Dibutyl Phthalate (DBP)	N.D.	N.D.	N.D.	N.D.
Diisobutyl Phthalate(DIBP)	N.D.	N.D.	N.D.	N.D.
Conclusion	Pass	Pass	Pass	Pass

Test Items	Result(mg/kg)			
	61	65	66	68
Bis-(2-ethylhexyl) Phthalate (DEHP)	N.D.	N.D.	N.D.	N.D.
Benzyl butyl Phthalate (BBP)	N.D.	N.D.	N.D.	N.D.
Dibutyl Phthalate (DBP)	N.D.	N.D.	N.D.	N.D.
Diisobutyl Phthalate(DIBP)	N.D.	N.D.	N.D.	N.D.
Conclusion	Pass	Pass	Pass	Pass

Test Items	Result(mg/kg)			
	69	71	72	74
Bis-(2-ethylhexyl) Phthalate (DEHP)	N.D.	N.D.	N.D.	N.D.
Benzyl butyl Phthalate (BBP)	N.D.	N.D.	N.D.	N.D.
Dibutyl Phthalate (DBP)	N.D.	N.D.	N.D.	N.D.
Diisobutyl Phthalate(DIBP)	N.D.	N.D.	N.D.	N.D.
Conclusion	Pass	Pass	Pass	Pass

Test Items	Result(mg/kg)			
	75	76	77	78
Bis-(2-ethylhexyl) Phthalate (DEHP)	N.D.	N.D.	N.D.	N.D.
Benzyl butyl Phthalate (BBP)	N.D.	N.D.	N.D.	N.D.
Dibutyl Phthalate (DBP)	N.D.	N.D.	N.D.	N.D.
Diisobutyl Phthalate(DIBP)	N.D.	N.D.	N.D.	N.D.
Conclusion	Pass	Pass	Pass	Pass

Test Items	Result(mg/kg)			
	80	81	82	83
Bis-(2-ethylhexyl) Phthalate (DEHP)	N.D.	N.D.	N.D.	N.D.
Benzyl butyl Phthalate (BBP)	N.D.	N.D.	N.D.	N.D.
Dibutyl Phthalate (DBP)	N.D.	N.D.	N.D.	N.D.
Diisobutyl Phthalate(DIBP)	N.D.	N.D.	N.D.	N.D.
Conclusion	Pass	Pass	Pass	Pass

Test Items	Result(mg/kg)			
	84	85	88	90
Bis-(2-ethylhexyl) Phthalate (DEHP)	N.D.	N.D.	N.D.	N.D.
Benzyl butyl Phthalate (BBP)	N.D.	N.D.	N.D.	N.D.
Dibutyl Phthalate (DBP)	N.D.	N.D.	N.D.	N.D.
Diisobutyl Phthalate(DIBP)	N.D.	N.D.	N.D.	N.D.
Conclusion	Pass	Pass	Pass	Pass

Test Items	Result(mg/kg)			
	94	96	98	99+123+125
Bis-(2-ethylhexyl) Phthalate (DEHP)	N.D.	N.D.	N.D.	193
Benzyl butyl Phthalate (BBP)	N.D.	N.D.	N.D.	N.D.
Dibutyl Phthalate (DBP)	N.D.	N.D.	N.D.	N.D.
Diisobutyl Phthalate(DIBP)	N.D.	N.D.	N.D.	N.D.
Conclusion	Pass	Pass	Pass	Pass

Test Items	Result(mg/kg)			
	100	101	102	103
Bis-(2-ethylhexyl) Phthalate (DEHP)	N.D.	N.D.	N.D.	N.D.
Benzyl butyl Phthalate (BBP)	N.D.	N.D.	N.D.	N.D.
Dibutyl Phthalate (DBP)	N.D.	N.D.	N.D.	N.D.
Diisobutyl Phthalate(DIBP)	N.D.	N.D.	N.D.	N.D.
Conclusion	Pass	Pass	Pass	Pass

Test Items	Result(mg/kg)			
	104	109	110	111
Bis-(2-ethylhexyl) Phthalate (DEHP)	N.D.	N.D.	N.D.	N.D.
Benzyl butyl Phthalate (BBP)	N.D.	N.D.	N.D.	N.D.
Dibutyl Phthalate (DBP)	N.D.	N.D.	N.D.	N.D.
Diisobutyl Phthalate(DIBP)	N.D.	N.D.	N.D.	N.D.
Conclusion	Pass	Pass	Pass	Pass

Test Items	Result(mg/kg)			
	112	113	115	117
Bis-(2-ethylhexyl) Phthalate (DEHP)	N.D.	N.D.	N.D.	N.D.
Benzyl butyl Phthalate (BBP)	N.D.	N.D.	N.D.	N.D.
Dibutyl Phthalate (DBP)	N.D.	N.D.	N.D.	N.D.
Diisobutyl Phthalate(DIBP)	N.D.	N.D.	N.D.	N.D.
Conclusion	Pass	Pass	Pass	Pass

Test Items	Result(mg/kg)			
	118	119	122	124
Bis-(2-ethylhexyl) Phthalate (DEHP)	N.D.	N.D.	N.D.	N.D.
Benzyl butyl Phthalate (BBP)	N.D.	N.D.	N.D.	N.D.
Dibutyl Phthalate (DBP)	N.D.	N.D.	N.D.	N.D.
Diisobutyl Phthalate(DIBP)	N.D.	N.D.	N.D.	N.D.
Conclusion	Pass	Pass	Pass	Pass

Test Items	Result(mg/kg)			
	126	132	133	135
Bis-(2-ethylhexyl) Phthalate (DEHP)	N.D.	N.D.	N.D.	N.D.
Benzyl butyl Phthalate (BBP)	N.D.	N.D.	N.D.	N.D.
Dibutyl Phthalate (DBP)	N.D.	N.D.	N.D.	N.D.
Diisobutyl Phthalate(DIBP)	N.D.	N.D.	N.D.	N.D.
Conclusion	Pass	Pass	Pass	Pass

Test Items	Result(mg/kg)			
	137	141	142	145
Bis-(2-ethylhexyl) Phthalate (DEHP)	N.D.	N.D.	N.D.	N.D.
Benzyl butyl Phthalate (BBP)	N.D.	N.D.	N.D.	N.D.
Dibutyl Phthalate (DBP)	N.D.	N.D.	N.D.	N.D.
Diisobutyl Phthalate(DIBP)	N.D.	N.D.	N.D.	N.D.
Conclusion	Pass	Pass	Pass	Pass

Test Items	Result(mg/kg)			
	146	149	150	151
Bis-(2-ethylhexyl) Phthalate (DEHP)	N.D.	N.D.	N.D.	N.D.
Benzyl butyl Phthalate (BBP)	N.D.	N.D.	N.D.	N.D.
Dibutyl Phthalate (DBP)	N.D.	N.D.	N.D.	N.D.
Diisobutyl Phthalate(DIBP)	N.D.	N.D.	N.D.	N.D.
Conclusion	Pass	Pass	Pass	Pass

Test Items	Result(mg/kg)			
	152	153	157	158
Bis-(2-ethylhexyl) Phthalate (DEHP)	N.D.	N.D.	N.D.	N.D.
Benzyl butyl Phthalate (BBP)	N.D.	N.D.	N.D.	N.D.
Dibutyl Phthalate (DBP)	N.D.	N.D.	N.D.	N.D.
Diisobutyl Phthalate(DIBP)	N.D.	N.D.	N.D.	N.D.
Conclusion	Pass	Pass	Pass	Pass

Test Items	Result(mg/kg)			
	160	162	164	165
Bis-(2-ethylhexyl) Phthalate (DEHP)	N.D.	N.D.	N.D.	N.D.
Benzyl butyl Phthalate (BBP)	N.D.	N.D.	N.D.	N.D.
Dibutyl Phthalate (DBP)	N.D.	N.D.	N.D.	N.D.
Diisobutyl Phthalate(DIBP)	N.D.	N.D.	N.D.	N.D.
Conclusion	Pass	Pass	Pass	Pass

Test Items	Result(mg/kg)			
	166	170	171	172
Bis-(2-ethylhexyl) Phthalate (DEHP)	N.D.	N.D.	N.D.	N.D.
Benzyl butyl Phthalate (BBP)	N.D.	N.D.	N.D.	N.D.
Dibutyl Phthalate (DBP)	N.D.	N.D.	N.D.	N.D.
Diisobutyl Phthalate(DIBP)	N.D.	N.D.	N.D.	N.D.
Conclusion	Pass	Pass	Pass	Pass

Test Items	Result(mg/kg)			
	176	177	179	180
Bis-(2-ethylhexyl) Phthalate (DEHP)	N.D.	N.D.	N.D.	N.D.
Benzyl butyl Phthalate (BBP)	N.D.	N.D.	N.D.	N.D.
Dibutyl Phthalate (DBP)	N.D.	N.D.	N.D.	N.D.
Diisobutyl Phthalate(DIBP)	N.D.	N.D.	N.D.	N.D.
Conclusion	Pass	Pass	Pass	Pass

Test Items	Result(mg/kg)			
	181	186	187	189
Bis-(2-ethylhexyl) Phthalate (DEHP)	N.D.	N.D.	N.D.	N.D.
Benzyl butyl Phthalate (BBP)	N.D.	N.D.	N.D.	N.D.
Dibutyl Phthalate (DBP)	N.D.	N.D.	N.D.	N.D.
Diisobutyl Phthalate(DIBP)	N.D.	N.D.	N.D.	N.D.
Conclusion	Pass	Pass	Pass	Pass

Test Items	Result(mg/kg)			
	191	195	196	199
Bis-(2-ethylhexyl) Phthalate (DEHP)	N.D.	N.D.	N.D.	N.D.
Benzyl butyl Phthalate (BBP)	N.D.	N.D.	N.D.	N.D.
Dibutyl Phthalate (DBP)	N.D.	N.D.	N.D.	N.D.
Diisobutyl Phthalate(DIBP)	N.D.	N.D.	N.D.	N.D.
Conclusion	Pass	Pass	Pass	Pass

Test Items	Result(mg/kg)			
	201	203	204	206
Bis-(2-ethylhexyl) Phthalate (DEHP)	N.D.	N.D.	N.D.	N.D.
Benzyl butyl Phthalate (BBP)	N.D.	N.D.	N.D.	N.D.
Dibutyl Phthalate (DBP)	N.D.	N.D.	N.D.	N.D.
Diisobutyl Phthalate(DIBP)	N.D.	N.D.	N.D.	N.D.
Conclusion	Pass	Pass	Pass	Pass

Test Items	Result(mg/kg)			
	207	208	210	211+212+ 213+214
Bis-(2-ethylhexyl) Phthalate (DEHP)	N.D.	N.D.	N.D.	90
Benzyl butyl Phthalate (BBP)	N.D.	N.D.	N.D.	N.D.
Dibutyl Phthalate (DBP)	N.D.	N.D.	N.D.	N.D.
Diisobutyl Phthalate(DIBP)	N.D.	N.D.	N.D.	N.D.
Conclusion	Pass	Pass	Pass	Pass

Test Items	Result(mg/kg)			
	216	217	219	220
Bis-(2-ethylhexyl) Phthalate (DEHP)	N.D.	N.D.	N.D.	N.D.
Benzyl butyl Phthalate (BBP)	N.D.	N.D.	N.D.	N.D.
Dibutyl Phthalate (DBP)	N.D.	N.D.	658	N.D.
Diisobutyl Phthalate(DIBP)	N.D.	N.D.	N.D.	N.D.
Conclusion	Pass	Pass	Pass	Pass

Test Items	Result(mg/kg)			
	223	225	227	228
Bis-(2-ethylhexyl) Phthalate (DEHP)	N.D.	N.D.	N.D.	N.D.
Benzyl butyl Phthalate (BBP)	N.D.	N.D.	N.D.	N.D.
Dibutyl Phthalate (DBP)	N.D.	N.D.	N.D.	N.D.
Diisobutyl Phthalate(DIBP)	N.D.	N.D.	N.D.	N.D.
Conclusion	Pass	Pass	Pass	Pass

Test Items	Result(mg/kg)			
	230	232	234	236
Bis-(2-ethylhexyl) Phthalate (DEHP)	N.D.	N.D.	N.D.	N.D.
Benzyl butyl Phthalate (BBP)	N.D.	N.D.	N.D.	N.D.
Dibutyl Phthalate (DBP)	N.D.	N.D.	N.D.	N.D.
Diisobutyl Phthalate(DIBP)	N.D.	N.D.	N.D.	N.D.
Conclusion	Pass	Pass	Pass	Pass

Test Items	Result(mg/kg)		
	238	239	244
Bis-(2-ethylhexyl) Phthalate (DEHP)	N.D.	N.D.	N.D.
Benzyl butyl Phthalate (BBP)	N.D.	N.D.	N.D.
Dibutyl Phthalate (DBP)	N.D.	N.D.	N.D.
Diisobutyl Phthalate(DIBP)	N.D.	N.D.	N.D.
Conclusion	Pass	Pass	Pass

Note: 1.N.D. = Not Detected (<MDL) MDL = Method Detection Limit
1mg/kg = 1ppm =0.0001% /=Not Regulated or Not Applicable
2. BL = Below the XRF screening limit
IN = Further chemical test will be conducted when the screening result inconclusive
OL = Further chemical test will be conducted while the result is above the screening limit.
3. For metal samples, the sample is negative for Cr(VI), if the Cr(VI) concentration is less than 0.10 µg/cm², the coating is considered a non- Cr(VI) based coating;
The sample is positive for Cr(VI), if the Cr(VI) concentration is greater than 0.13 µg/cm²,
The sample coating is considered to contain Cr(VI);
The result is considered to be inconclusive, the Cr(VI) concentration is between the 0.10 µg/cm² and 0.13 µg/cm², unavoidable coating variations may influence the determination.
Because the storage condition and production date of the sample are not known, the test results of the sample of hexavalent chromium can only represent the state of hexavalent chromium in the samples tested.

Remark: 1. When conducting the test for PBBs&PBDEs, XRF was introduced to screen Br Exclusively; When conducting the test for Hexavalent Chromium, XRF was introduced to screen Chromium exclusively.
2. According to the client's statement , the material of the sample(s) comply with RoHS directive 2011/65/EU Annex III Exemption, Corresponding exemption clause:
#1 6(c) Lead is exempted as copper alloy containing up to 4% lead by weight .
3. Part No.233 Resubmitted Date: May. 27, 2022.

Test Method:

When screening results exceed the XRF screening limit in IEC 62321-3-1: 2013, further use of chemical methods are required to test the Lead(Pb), Cadmium(Cd), Mercury(Hg), Hexavalent Chromium(Cr(VI)), Polybrominated Biphenyls(PBBs) and Polybrominated Diphenyl Ethers(PBDEs)

1. XRF screening limits in mg/kg for regulated elements according to IEC 62321-3-1:2013

Element	Limit of IEC 62321-3-1:2013 (mg/kg)		
	Polymers	Metals	Composite material
Pb	$BL \leq (700-3\sigma) < X < (1300+3\sigma) \leq OL$	$BL \leq (700-3\sigma) < X < (1300+3\sigma) \leq OL$	$BL \leq (500-3\sigma) < X < (1500+3\sigma) \leq OL$
Cd	$BL \leq (70-3\sigma) < X < (130+3\sigma) \leq OL$	$BL \leq (70-3\sigma) < X < (130+3\sigma) \leq OL$	$LOD < X < (150+3\sigma) \leq OL$
Hg	$BL \leq (700-3\sigma) < X < (1300+3\sigma) \leq OL$	$BL \leq (700-3\sigma) < X < (1300+3\sigma) \leq OL$	$BL \leq (500-3\sigma) < X < (1500+3\sigma) \leq OL$
Cr	$BL \leq (700-3\sigma) < X$	$BL \leq (700-3\sigma) < X$	$BL \leq (500-3\sigma) < X$
Br	$BL \leq (300-3\sigma) < X$	/	$BL \leq (250-3\sigma) < X$

Note: BL= Below the XRF screening limit OL=Over the XRF screening limit
 X=The symbol"X"marks the region where further investigation is necessary.
 3σ =The reproducibility of analytical instruments LOD= Detection limit

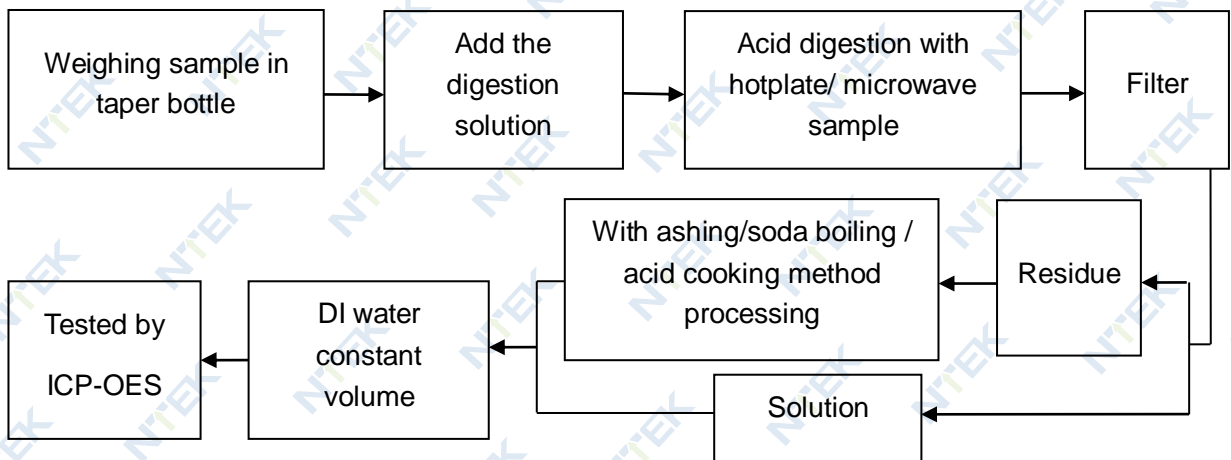
2. Chemical Test

Test item	Test method	Test instrument	MDL	Limit [△]
Lead (Pb)	IEC 62321-5:2013 Ed.1.0	ICP-OES	10 mg/kg	1000 mg/kg
Cadmium (Cd)	IEC 62321-5:2013 Ed.1.0	ICP-OES	10 mg/kg	100 mg/kg
Mercury (Hg)	IEC 62321-4:2013+AMD1:2017	ICP-OES	10 mg/kg	1000 mg/kg
Hexavalent Chromium(Cr(VI))	IEC 62321-7-1:2015 Ed.1.0	UV-Vis	0.10 μg/cm ²	1000 mg/kg
	IEC 62321-7-2:2017 Ed.1.0		8 mg/kg	
Polybrominated Biphenyls(PBBs)	IEC 62321-6:2015 Ed.1.0	GC-MS	100 mg/kg	1000 mg/kg
Polybrominated, Diphenyl Ethers(PBDEs)	IEC 62321-6:2015 Ed.1.0	GC-MS	100 mg/kg	1000 mg/kg
Bis-(2-ethylhexyl) Phthalate (DEHP)	IEC 62321-8:2017 Ed.1.0	GC-MS	50 mg/kg	1000 mg/kg
Benzyl butyl Phthalate (BBP)	IEC 62321-8:2017 Ed.1.0	GC-MS	50 mg/kg	1000 mg/kg
Dibutyl Phthalate (DBP)	IEC 62321-8:2017 Ed.1.0	GC-MS	50 mg/kg	1000 mg/kg
Diisobutyl Phthalate (DIBP)	IEC 62321-8:2017 Ed.1.0	GC-MS	50 mg/kg	1000 mg/kg

[△]Limit is from RoHS Directive (EU) 2015/863 amending Annex II to Directive 2011/65/EU

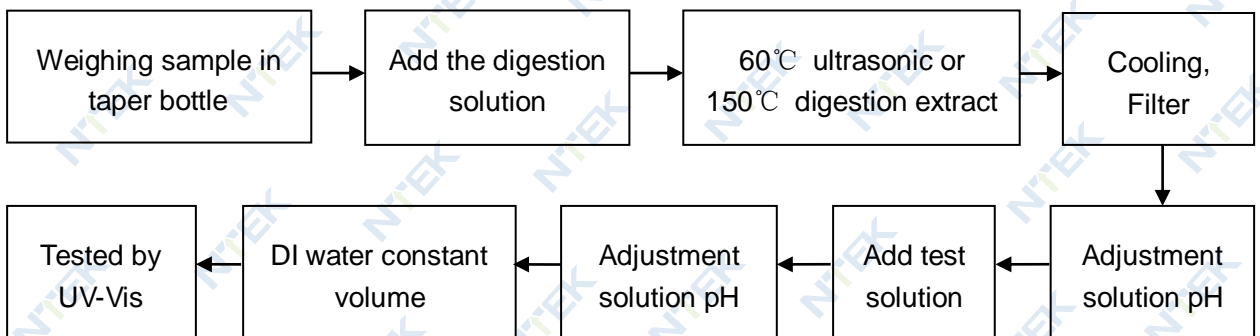
Test Flow:

1. Lead(Pb), Cadmium(Cd) , Mercury (Hg)

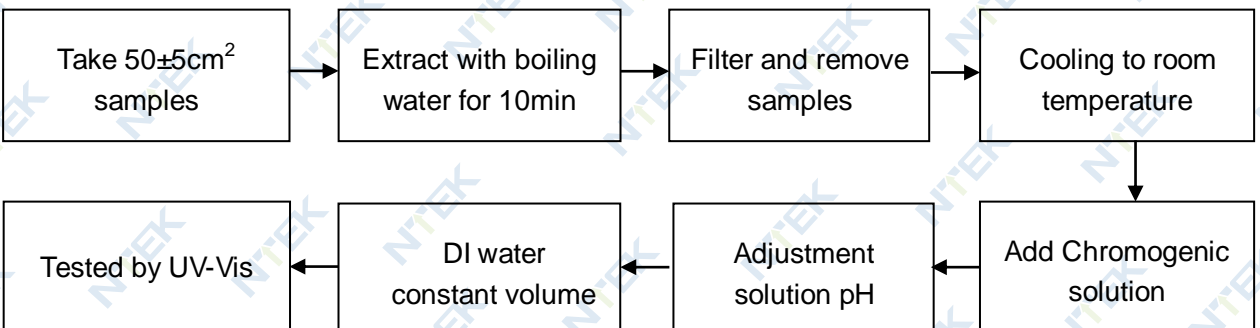


2. Hexavalent Chromium(Cr(VI))

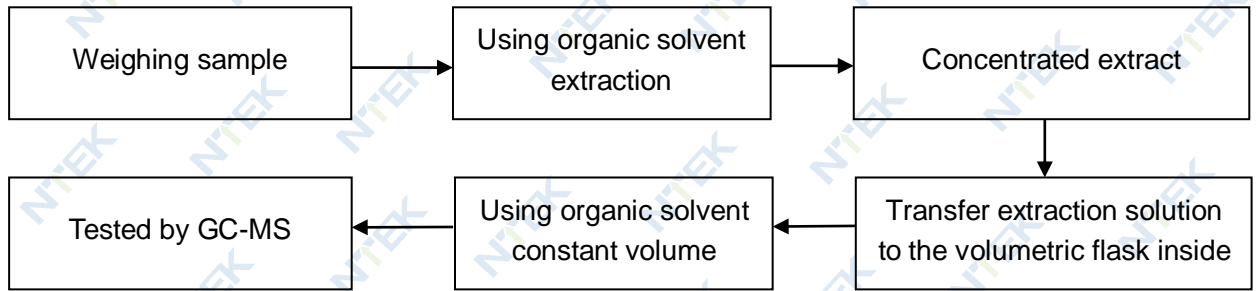
2.1 Non- metal sample(s)



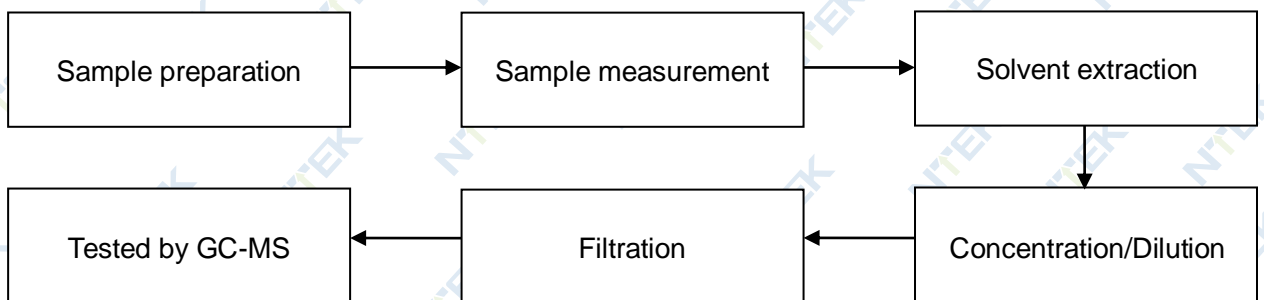
2.2 Metal sample(s)



3. PBBs/ PBDEs



4. Phthalates



Sample photo(s):



Fig.1



Fig.2



Fig.3



Fig.4



Fig.5

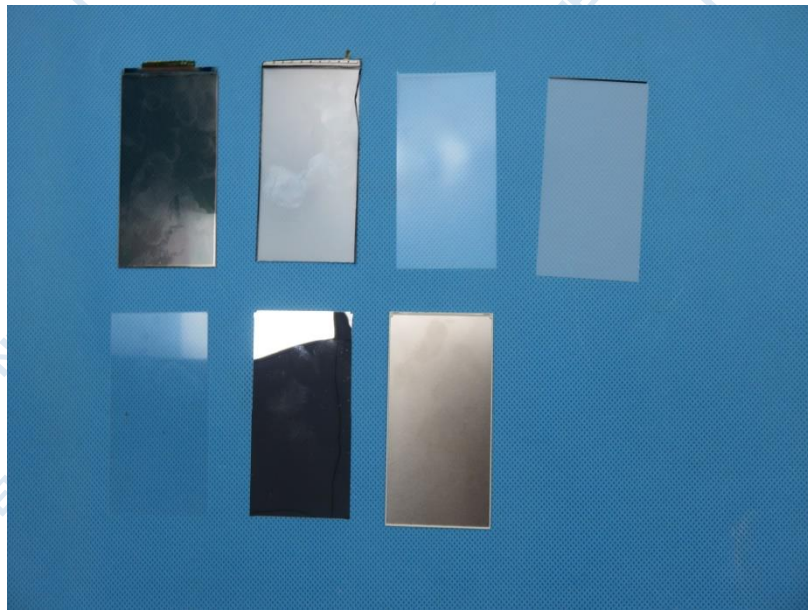


Fig.6

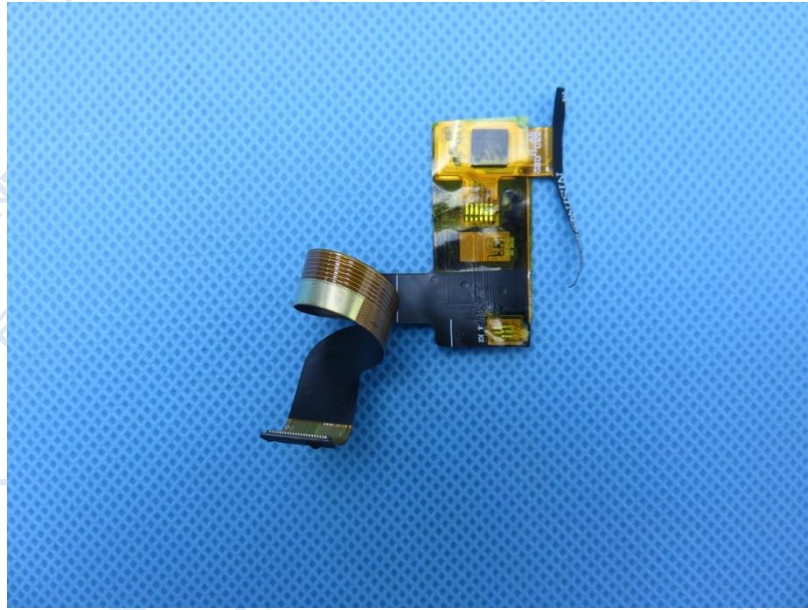


Fig.7

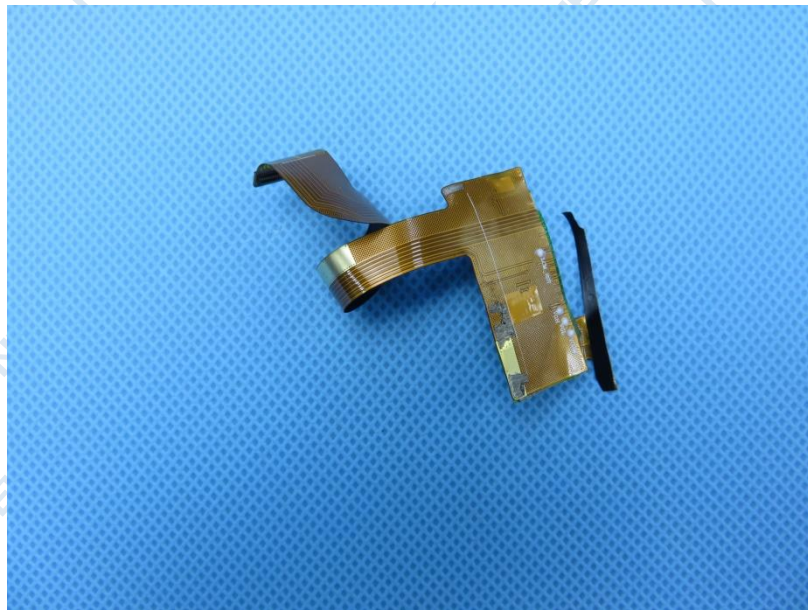


Fig.8

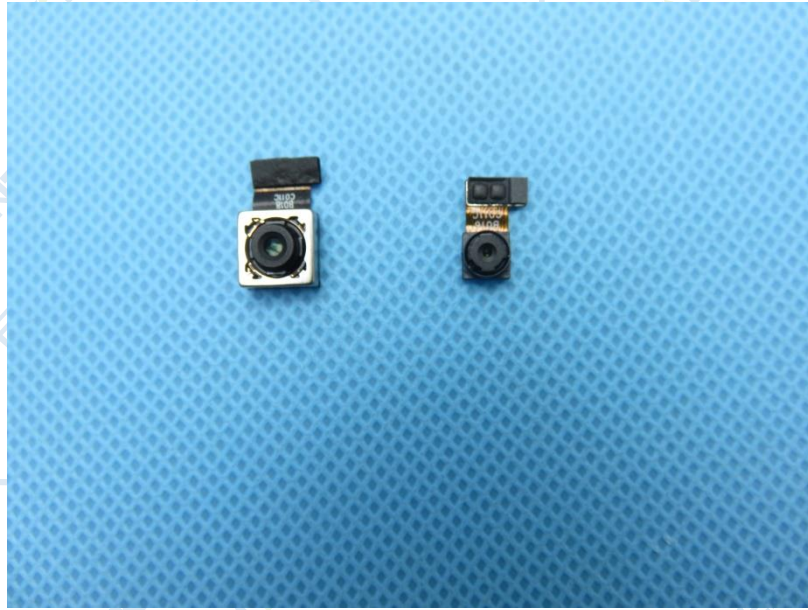


Fig.9

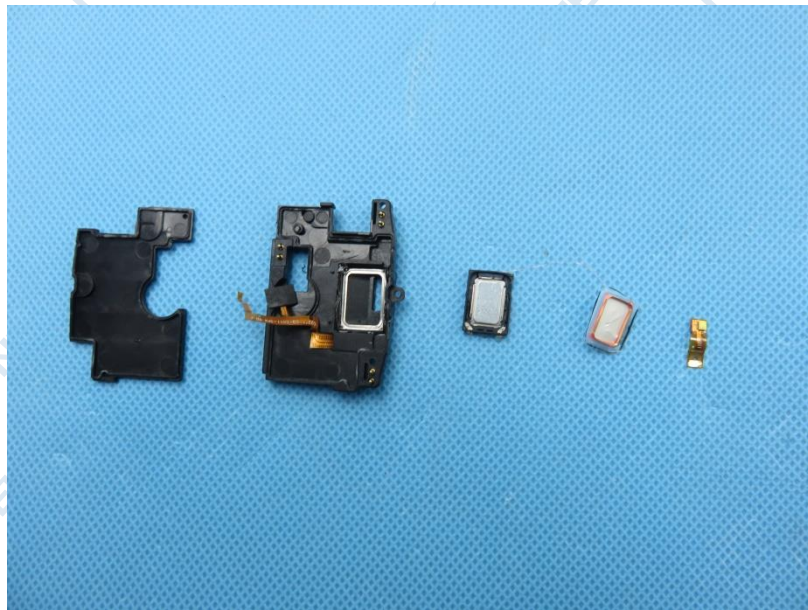


Fig.10

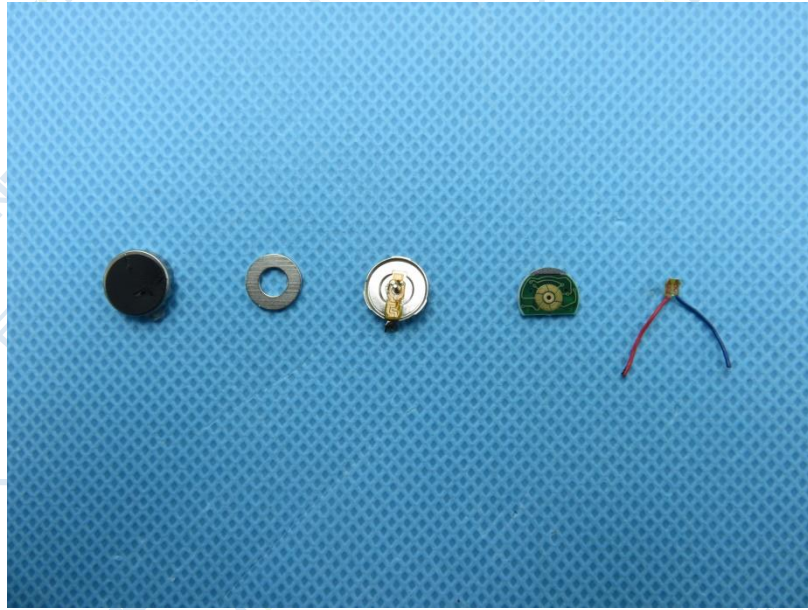


Fig.11



Fig.12

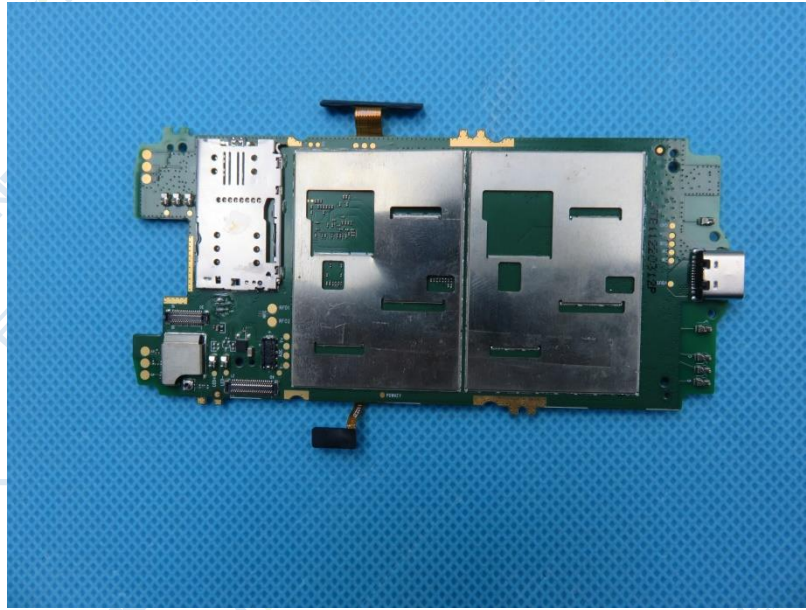


Fig.13



Fig.14

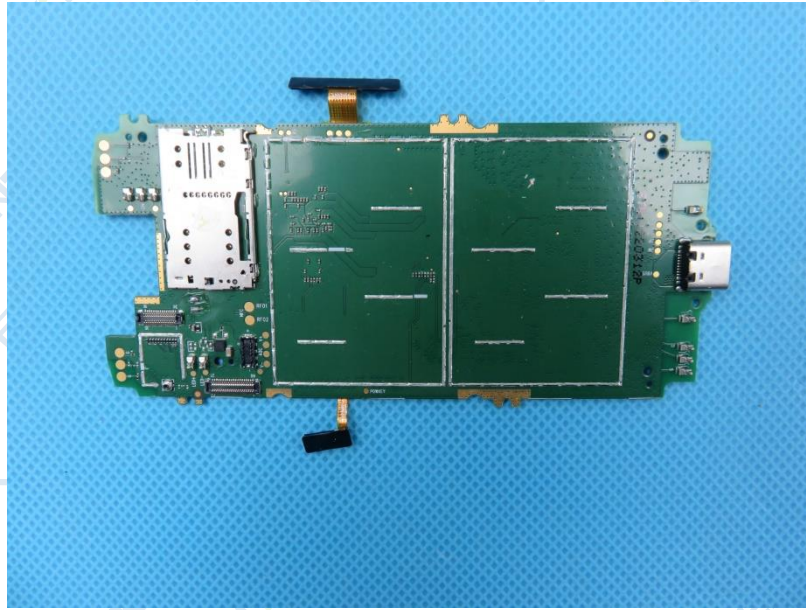


Fig.15

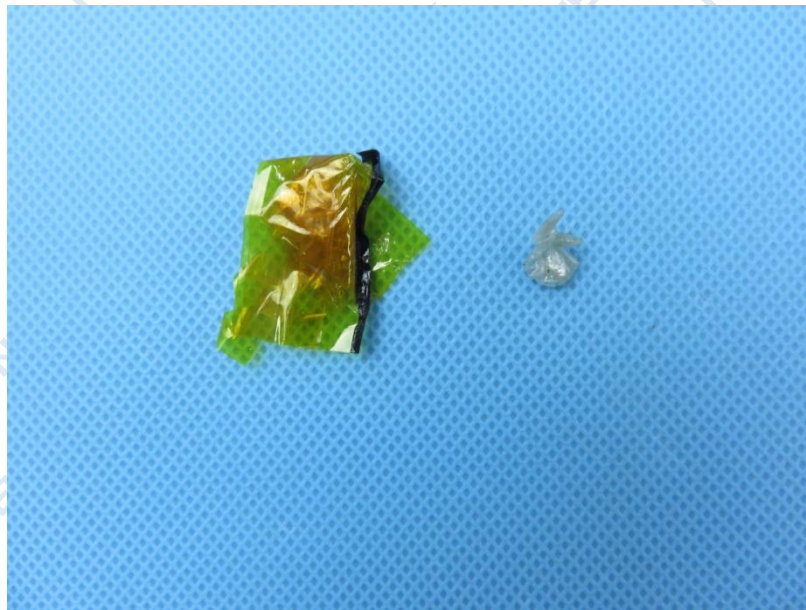


Fig.16

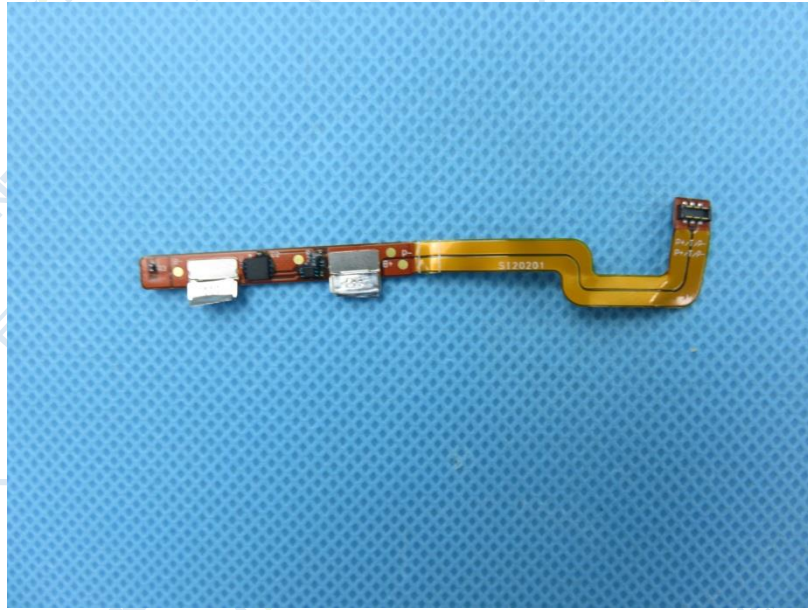


Fig.17



Fig.18



Fig.19

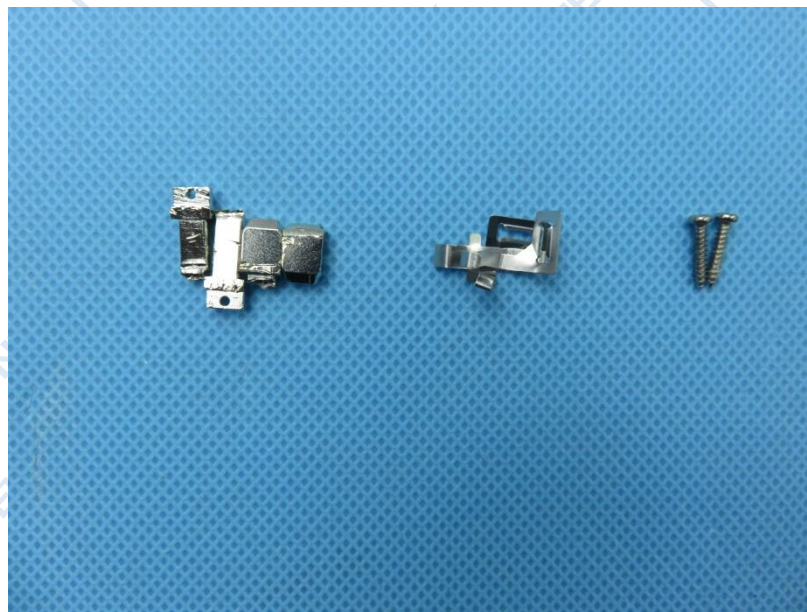


Fig.20

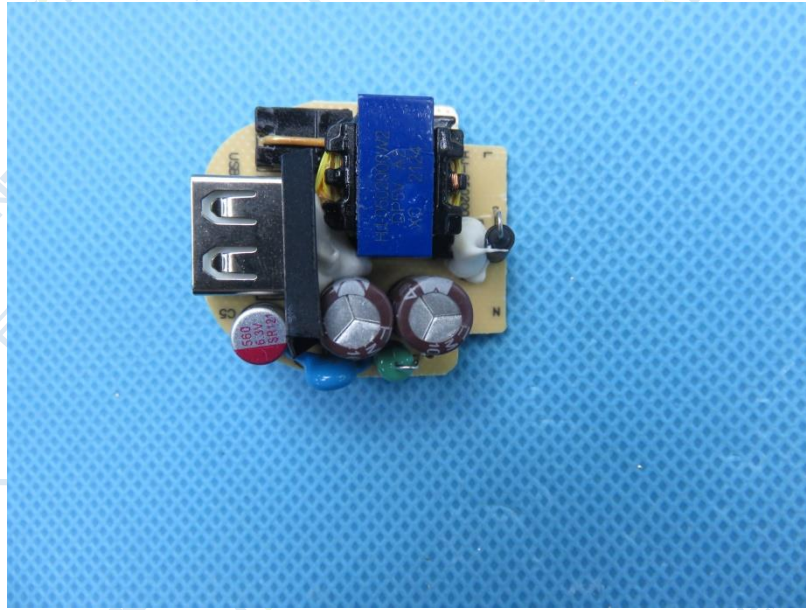


Fig.21

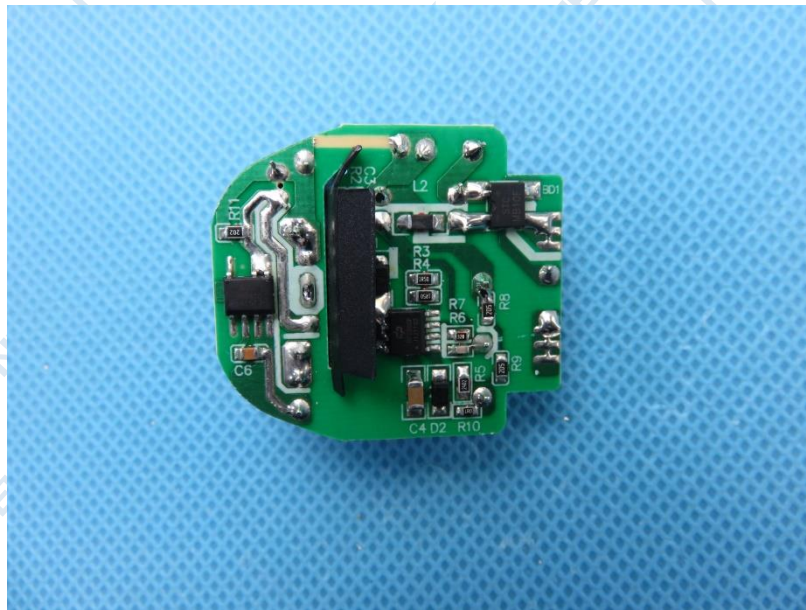


Fig.22



Fig.23

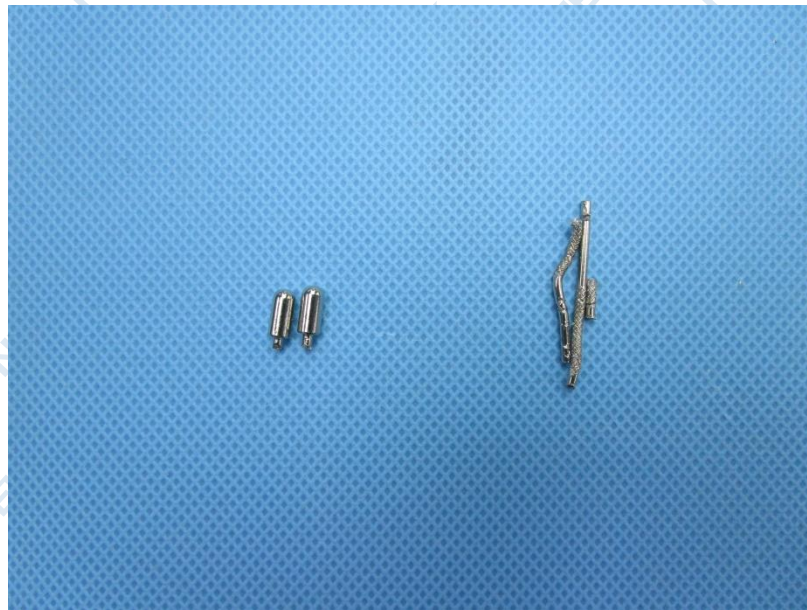


Fig.24

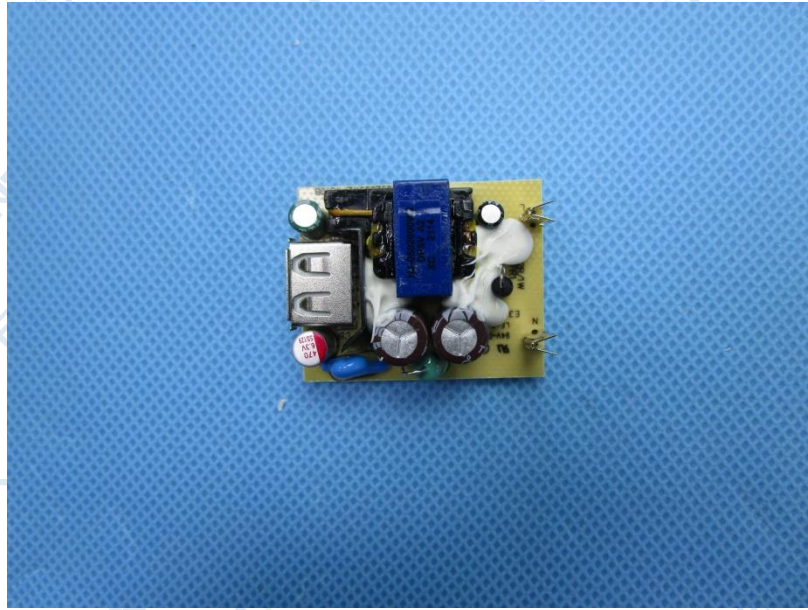


Fig.25

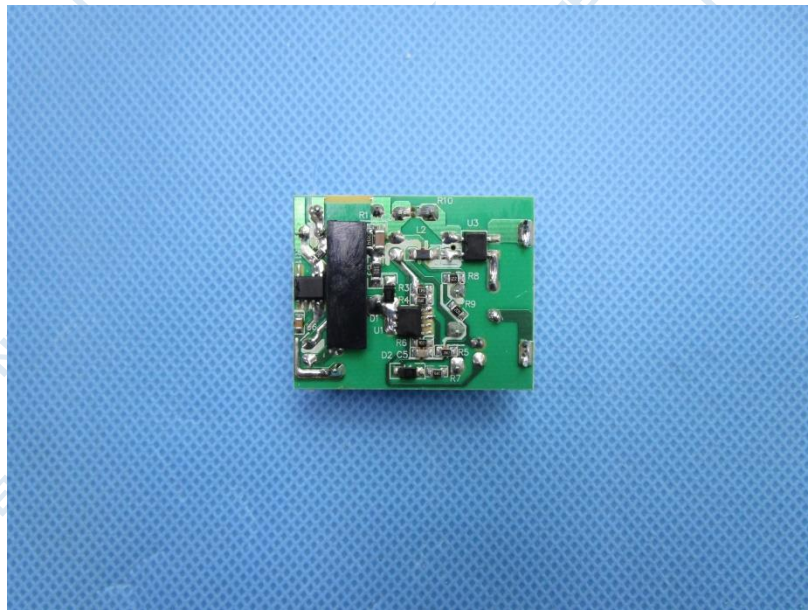


Fig.26

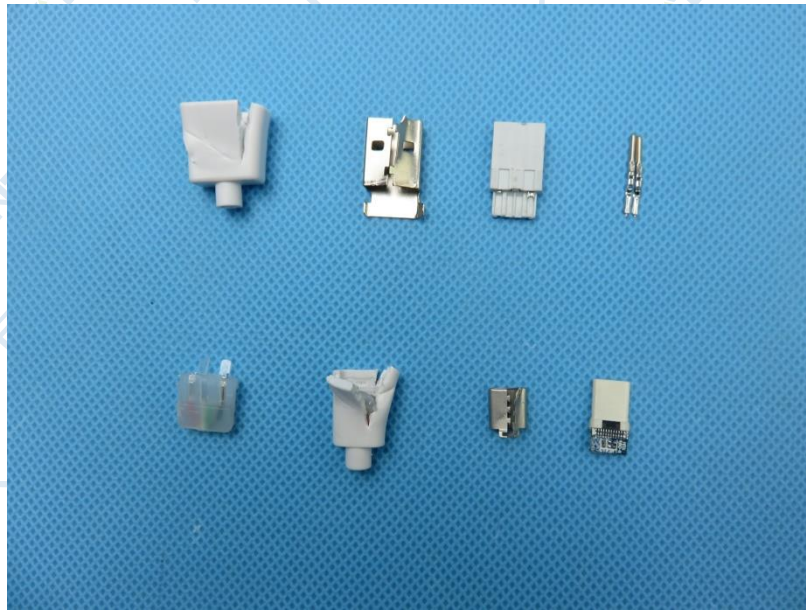


Fig.27

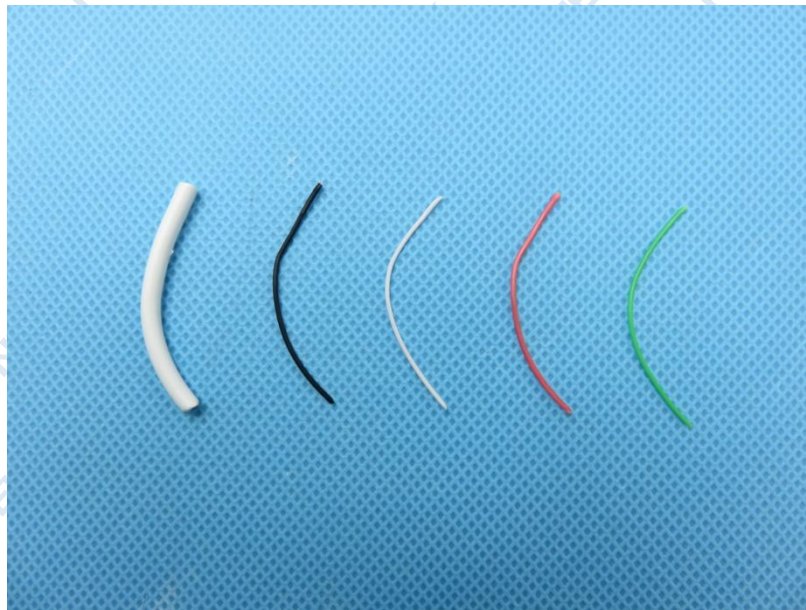


Fig.28

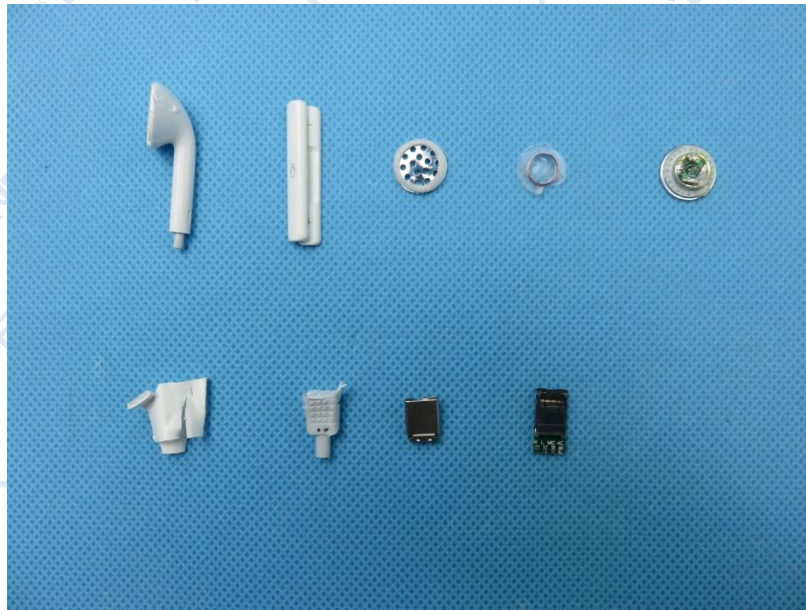


Fig.29



Fig.30

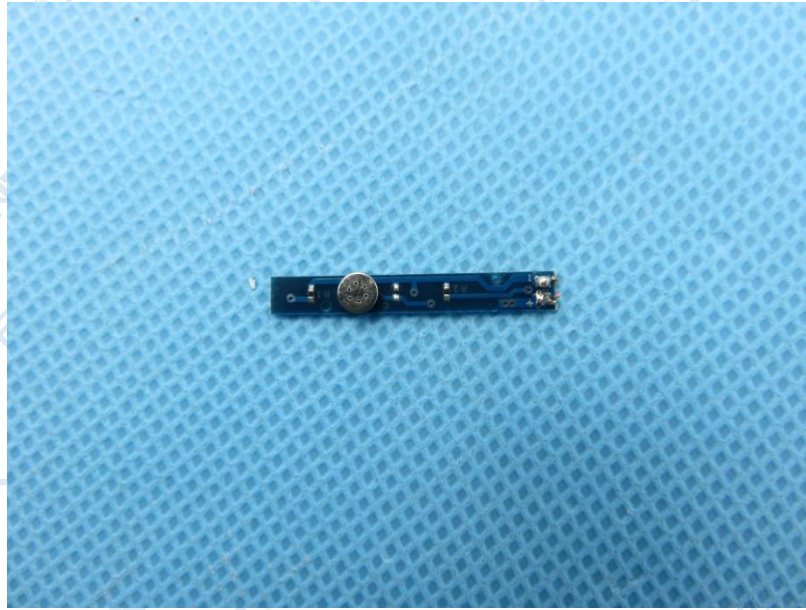


Fig.31



Fig.32

****End of Report****

The test results or data in this report will be used only for education, scientific research, enterprise product development and internal quality control or other purposes.

The test report is effective only with both signature and specialized stamp, The result(s) shown in this report refer only to the sample(s) tested. Without written approval of NTEK, this report can't be reproduced except in full.